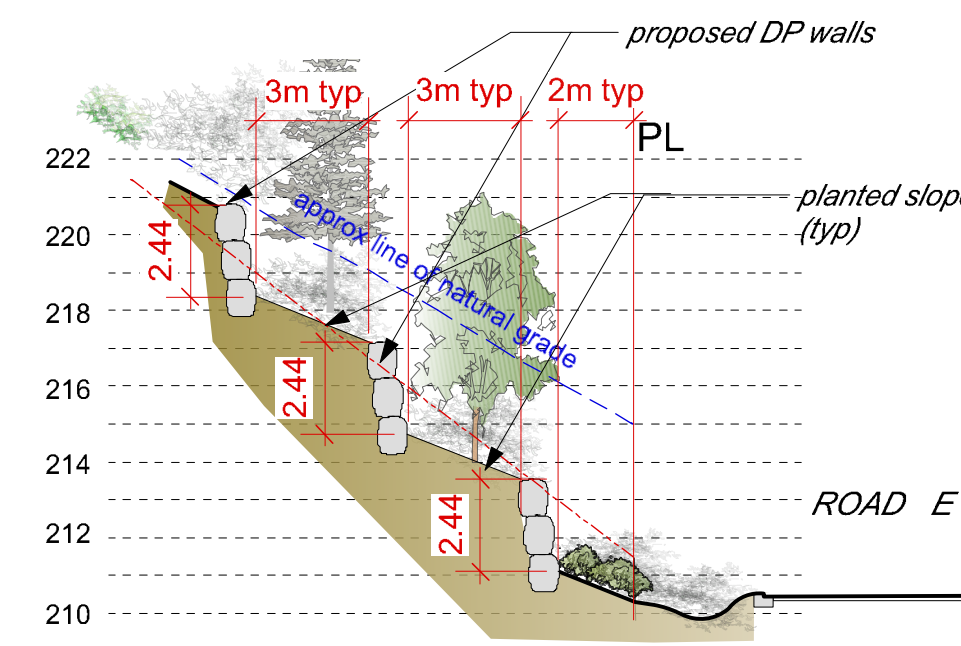
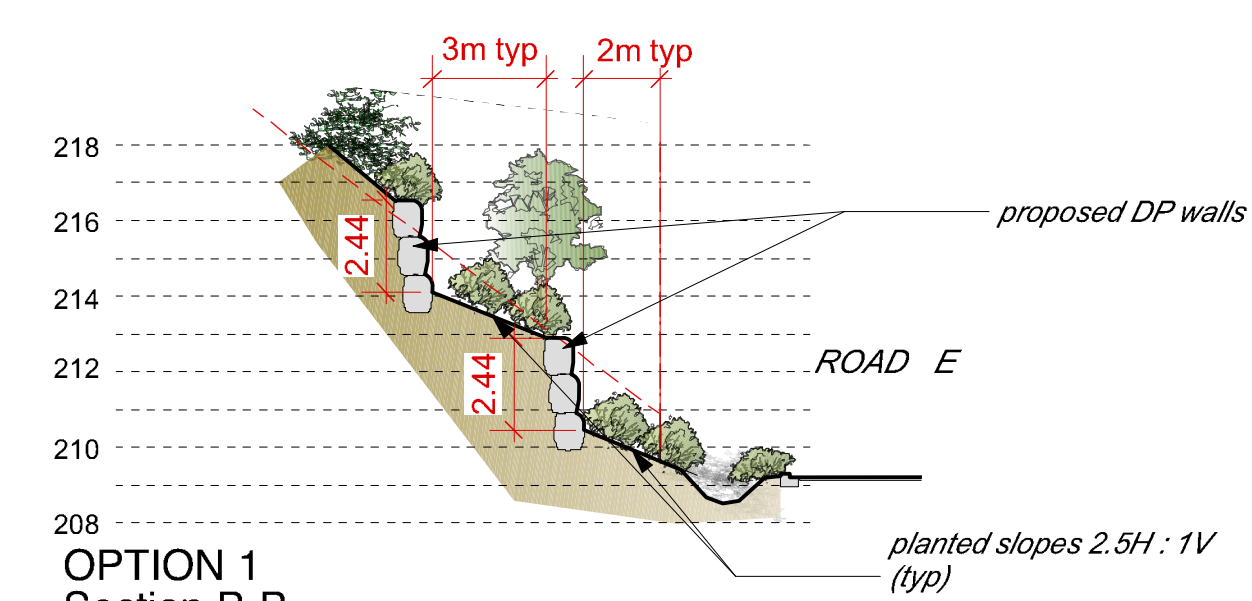


PLAN VIEW - LOT 14 DP WALL - **OPTION 1** ROCK STACK WALLS ONLY
SCALE: 1:200

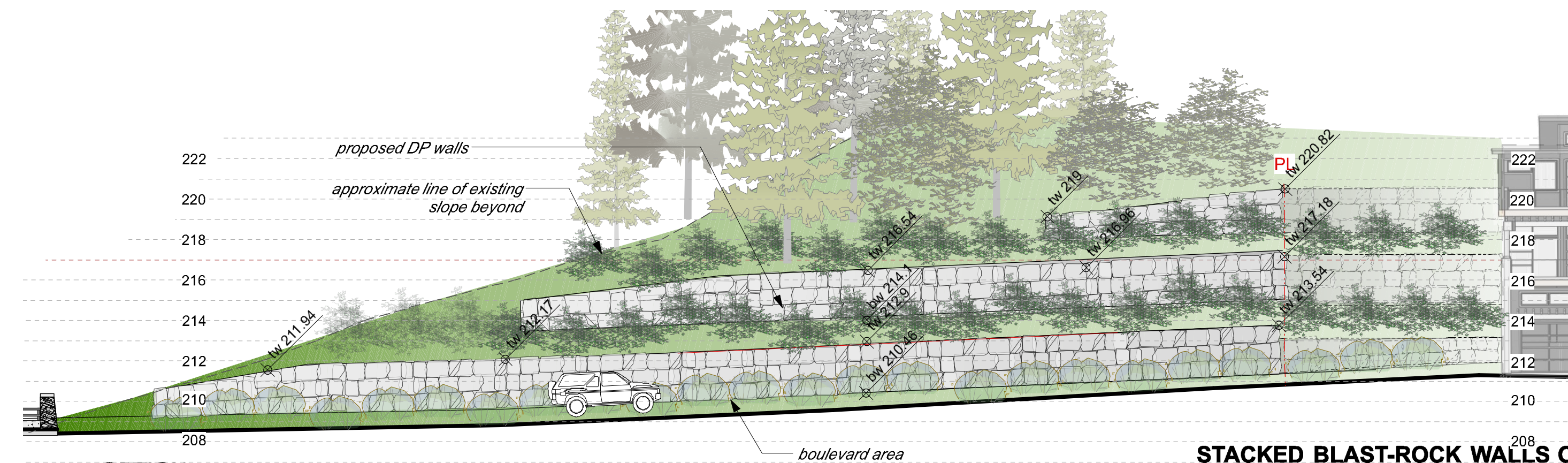


OPTION 1
Section A-A
Scale: 1:200



OPTION 1
Section B-B
Scale: 1:200

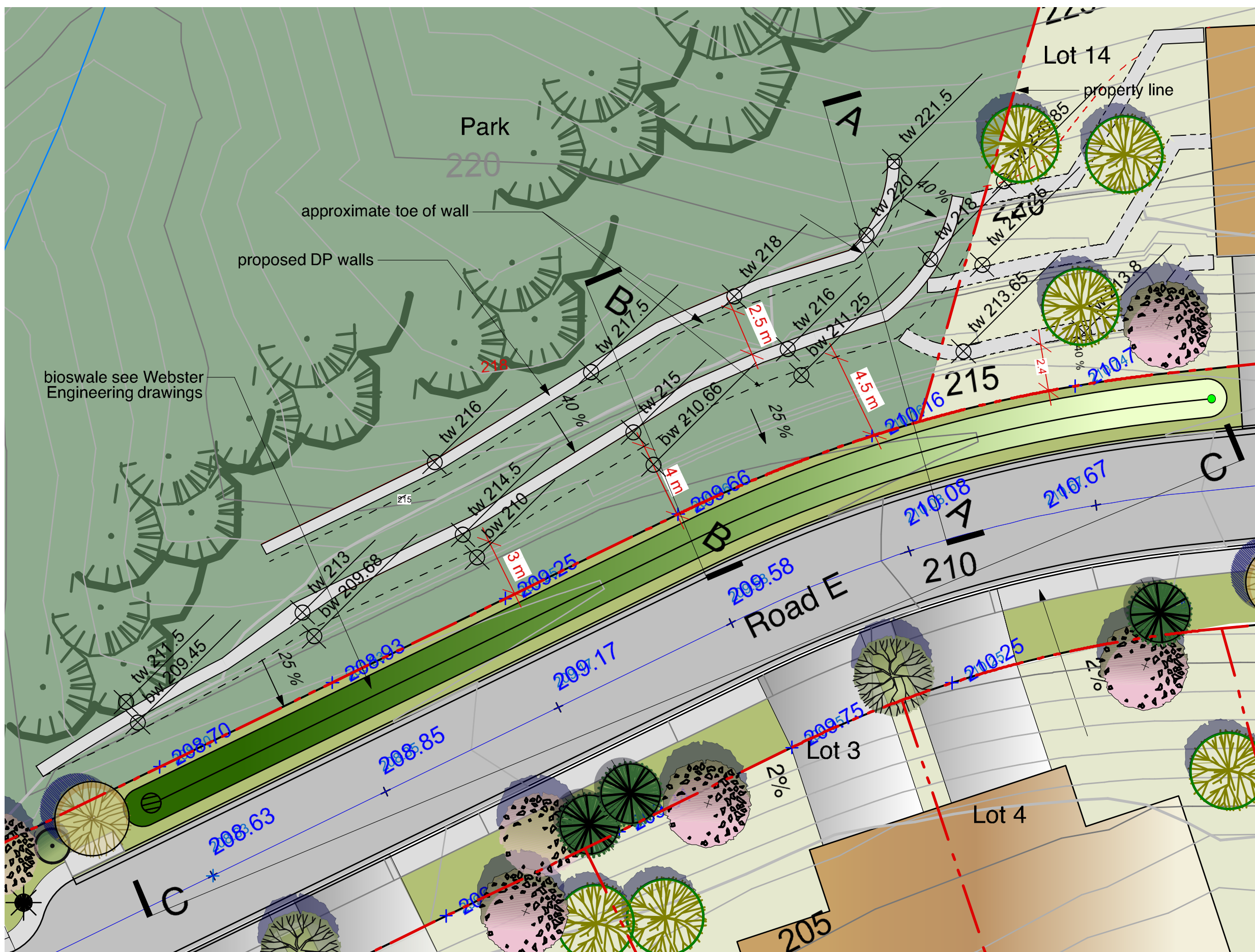
Note:
DP WALLS - detailed designs to be prepared by professional engineer to satisfaction of Manager of Development Engineering.



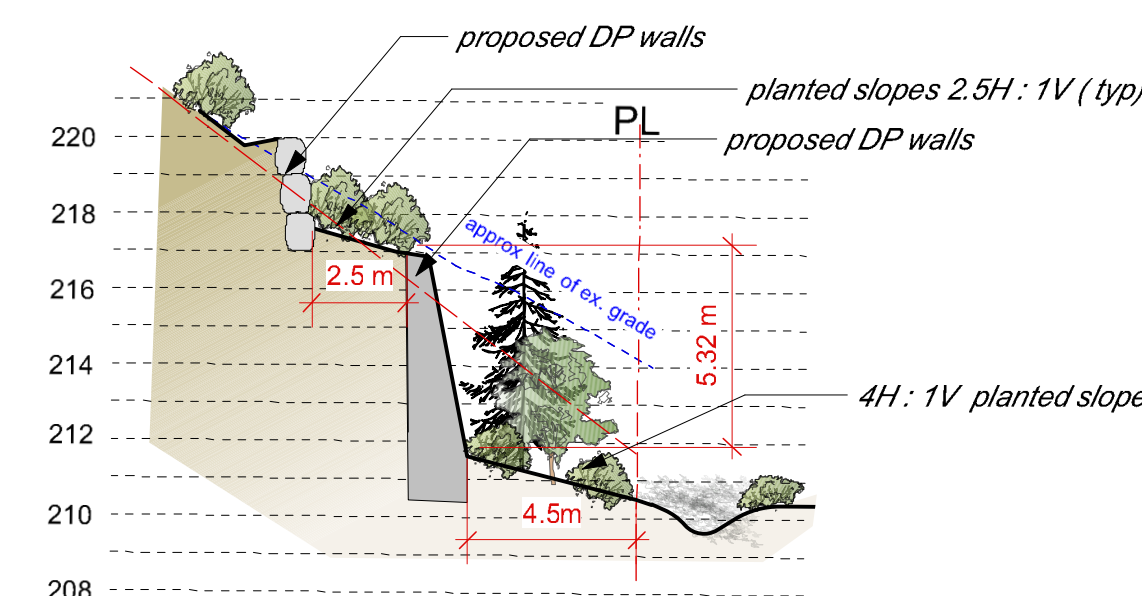
OPTION 1
ELEVATION C-C
Scale: 1:200

STACKED BLAST-ROCK WALLS ONLY

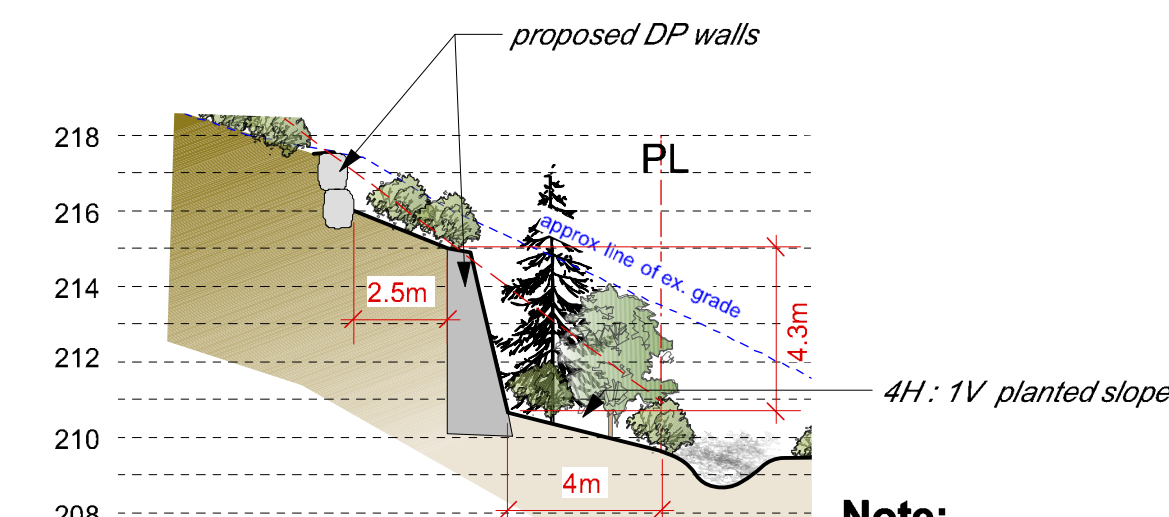
Note:
-2.44 m maximum exposed wall height
-walls, grading and house shown on lot 14 are schematic only



PLAN VIEW - LOT 14 DP WALL - **OPTION 2** ROCK STACK AND SCULPTED SHOTCRETE WALLS (IF SOIL CONDITIONS ALLOW)
SCALE: 1:200

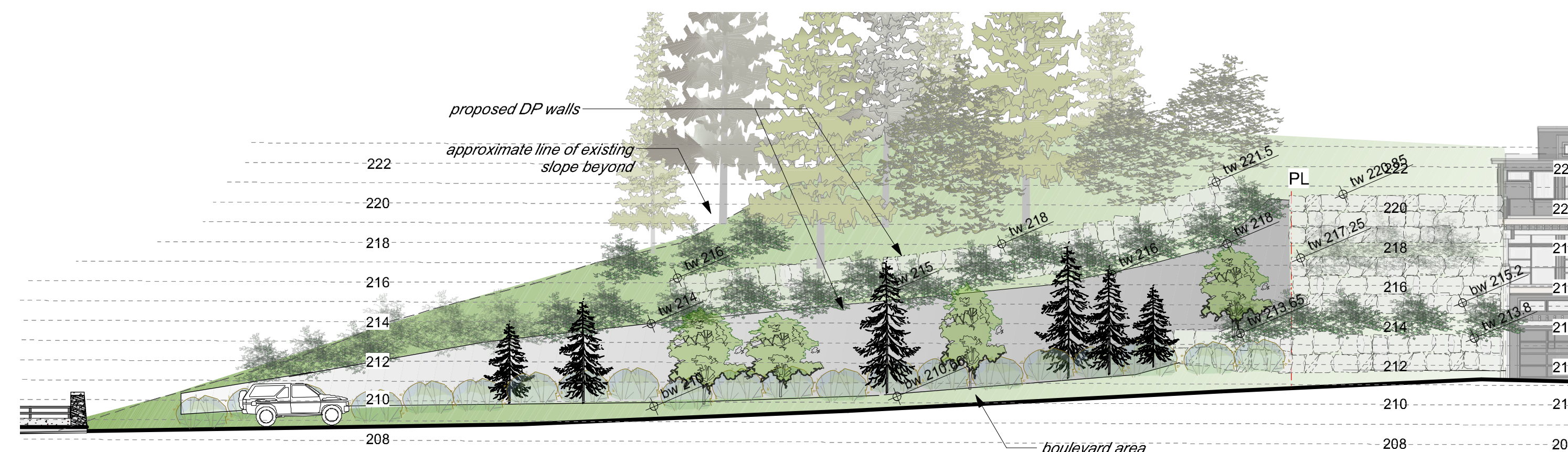


OPTION 2
SECTION A-A
Scale: 1:200



OPTION 2
SECTION B-B
Scale: 1:200

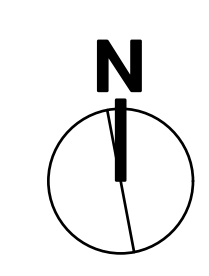
Note:
DP WALLS - detailed designs to be prepared by professional engineer to satisfaction of Manager of Development Engineering.



OPTION 2
ELEVATION C-C
Scale: 1:200

STACKED BLAST-ROCK AND SCULPTED SHOTCRETE WALLS (if soil conditions allow)

Note:
-maximum exposed wall height 6.0m for shotcrete, 2.44m for stacked blast rock
-walls, grading & house shown on lot 14 are schematic only
-shotcrete surface to be coloured and sculpted



consultants:



project:

RODGERS CREEK - AREA 4
WEST VANCOUVER, BC

revisions:

1. Issue for Review March 20, 2013
2. Issue for Review June 12, 2013
3. Issue for Review June 18, 2013
4. Issue for D.P. June 24, 2013

mmc: