

2320-01 (b)

From: ()
Sent: June 13, 2009 10:27 PM
To: MayorandCouncil
Cc: ()
Subject: Fwd: 895, Highland Drive
Attachments: DSC02144.JPG

My wife and I live at () On our return home on May 27 2009, () we were appalled to see that development at 895 Highland Drive had resulted in an unsightly 20+ feet in height mountain of earth adjacent () (See attached photo.)

Furthermore, this mountain was not covered and now, after our protestations, has been partially covered by a hideous blue plastic sheet, but the slope adjacent () has been left largely uncovered and therefore, in the event of slippage, our property is exposed to significant damage. While we are not familiar with the law regarding height restrictions and obstruction of view, we are outraged that the Municipality of West Vancouver would allow developers to completely disregard the visual impact that they have on neighboring properties. We request that the Mayor and council visit our back yard and witness first-hand the unsightly mountain adjacent (). Then we request they ask themselves if they would consider it acceptable were they in our position.

We have lived here for nine years and believe that we are fully participating and responsible members of the West Vancouver Community. We pay our municipal taxes and in return expect that the Municipality would protect us from such violation. We find it incomprehensible that, when permission was given for the development of 895 Highland Drive, such permission included the complete disregard for neighboring properties.

Madam Mayor and council, we request your immediate intervention by instructing the developer of 895 Highland Drive to immediately reduce the height of the mountain of excavated material to a level that is below () fence line.

In anticipation of your support, we thank you.

Regards,

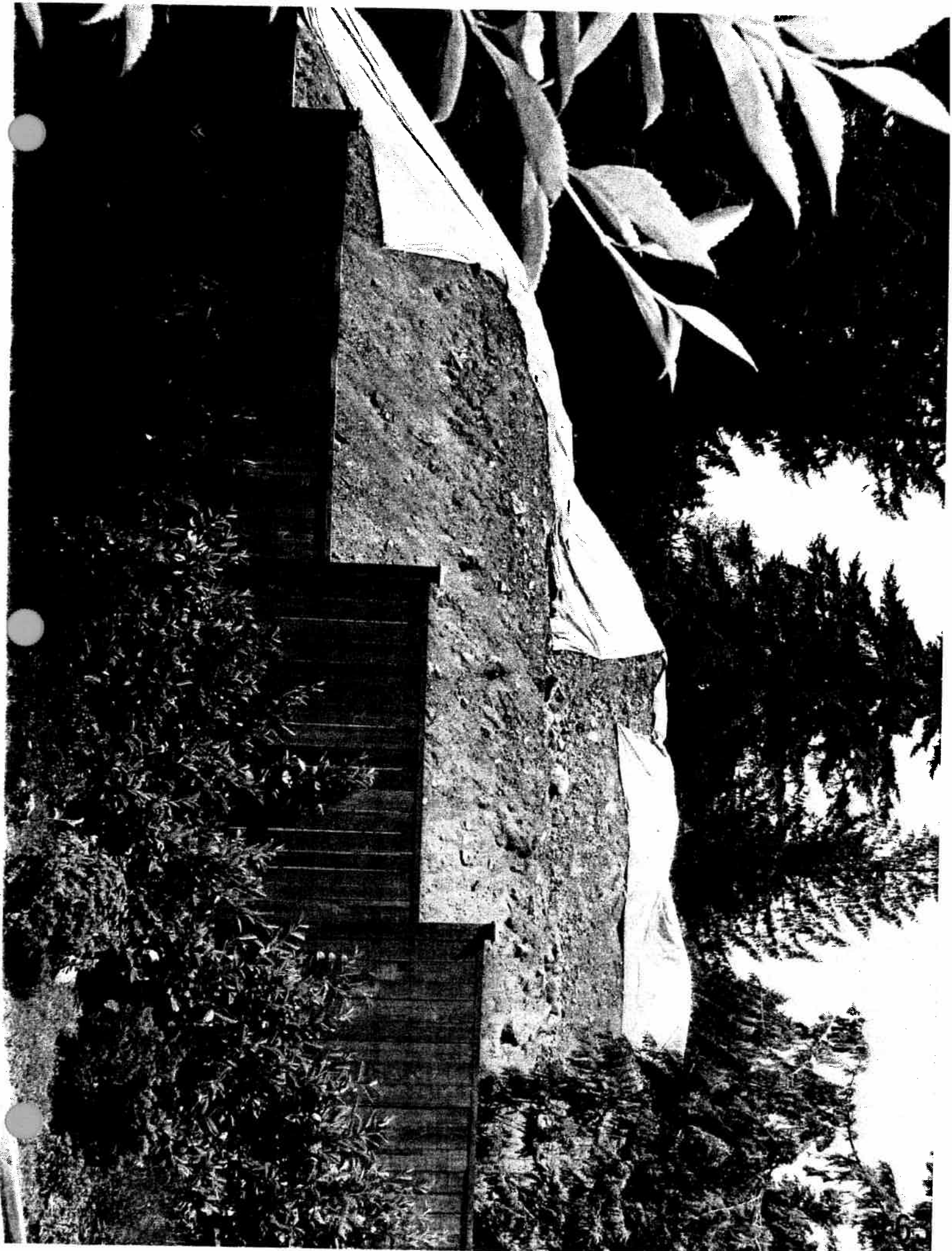
()

* * * * *

()

* * * * *

()



This page intentionally left blank



This page intentionally left blank



From: ()
Sent: June 14, 2009 8:38 PM
To: MayorandCouncil
Subject: 895, Highland Drive

Attachments: DSC02148.JPG



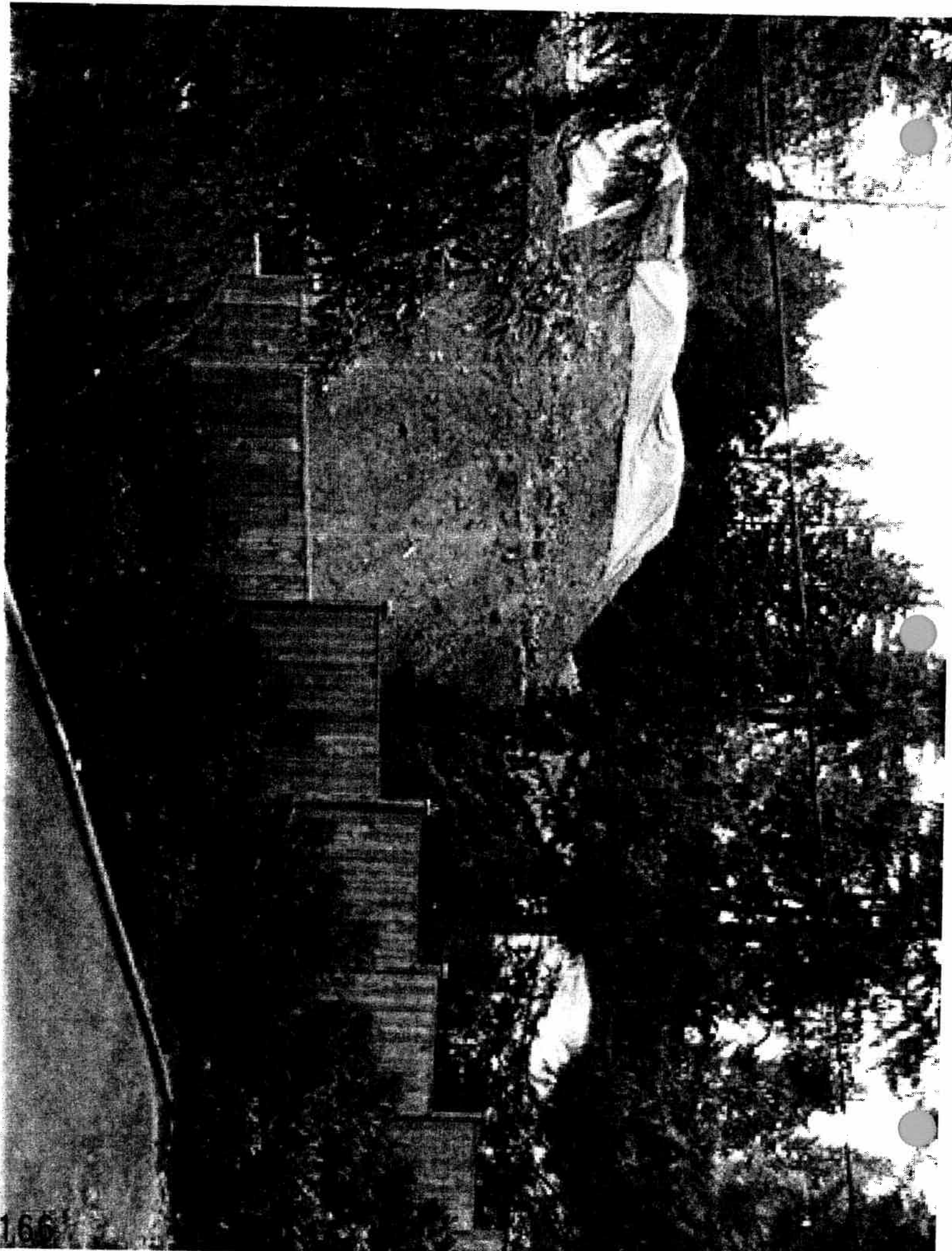
DSC02148.JPG (91 KB)

Further to our previous email, this is the view from our deck. To say we are outraged that you would allow this to happen is a gross understatement. We plead for your support to correct this visual abomination.

()
You have been sent 1 picture.

DSC02148.JPG

These pictures were sent with Picasa, from Google.
Try it out here: <http://picasa.google.com/>



166