

REVISION TABLE	DESCRIPTION
NUMBER	DATE

3085 Deer Ridge Close

Overview

DRAWINGS PROVIDED BY: Iman Khabiri
360 Dream Homes

DATE:

2026-05-22

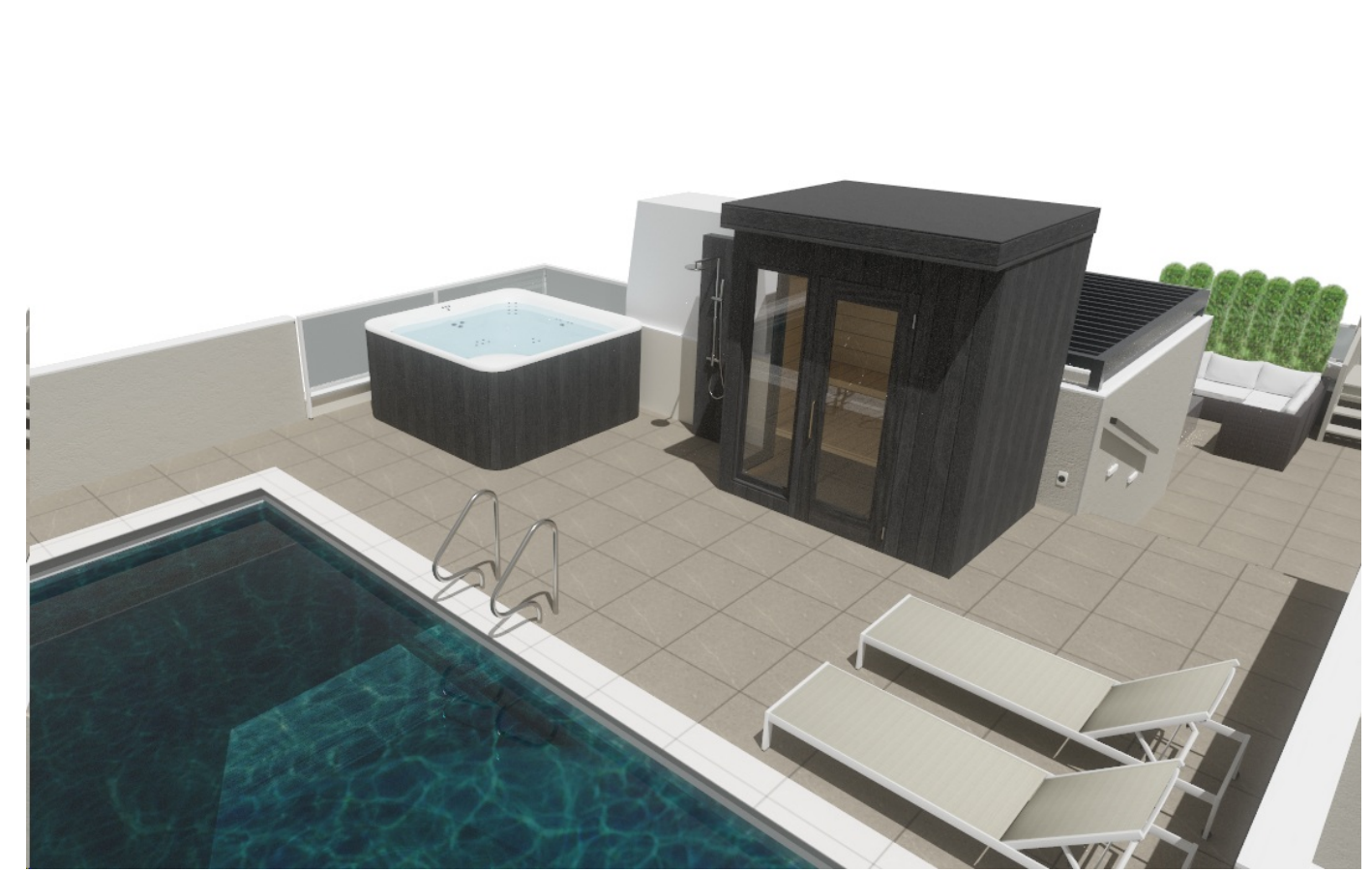
SCALE:

SHEET:

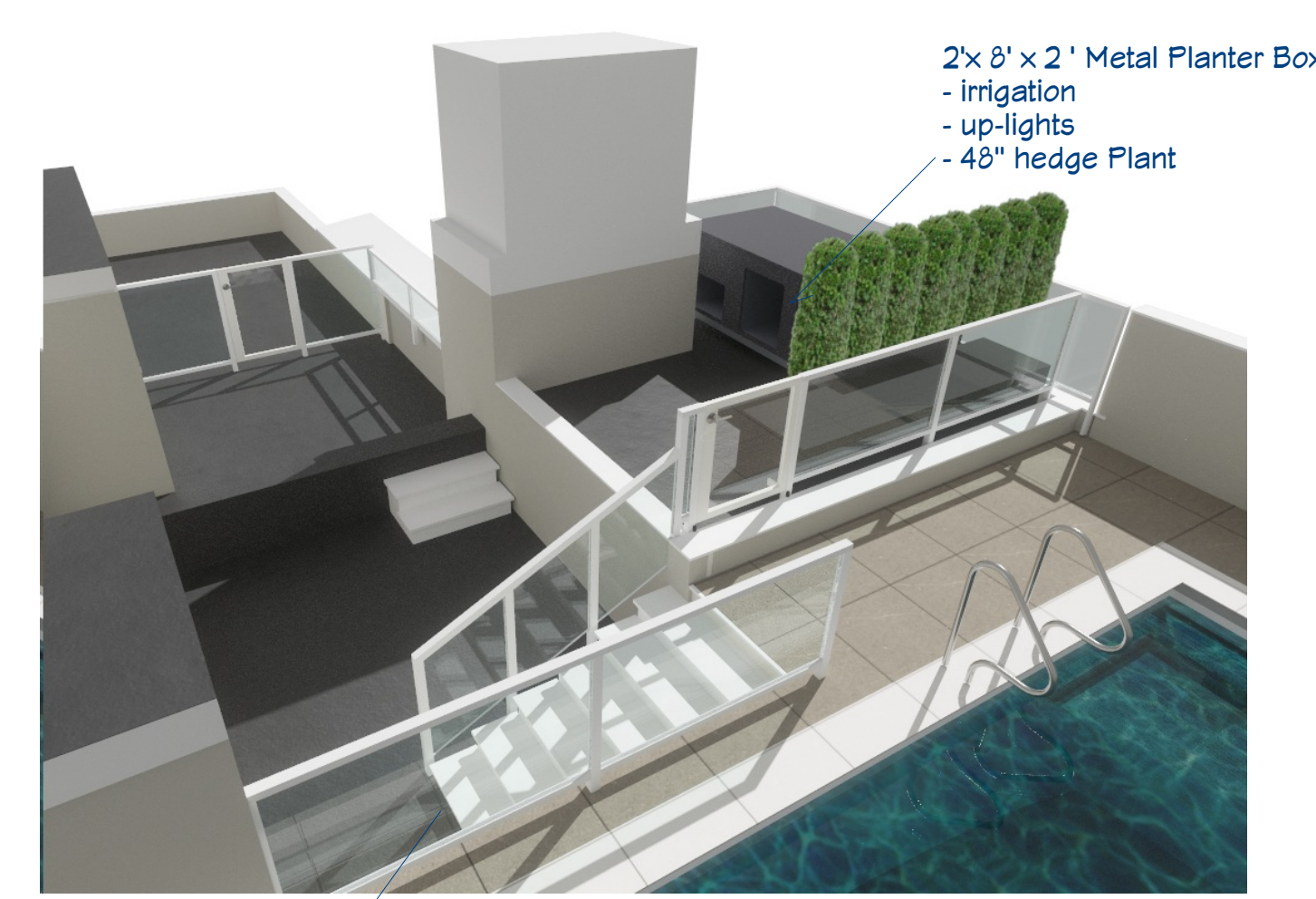
P-6



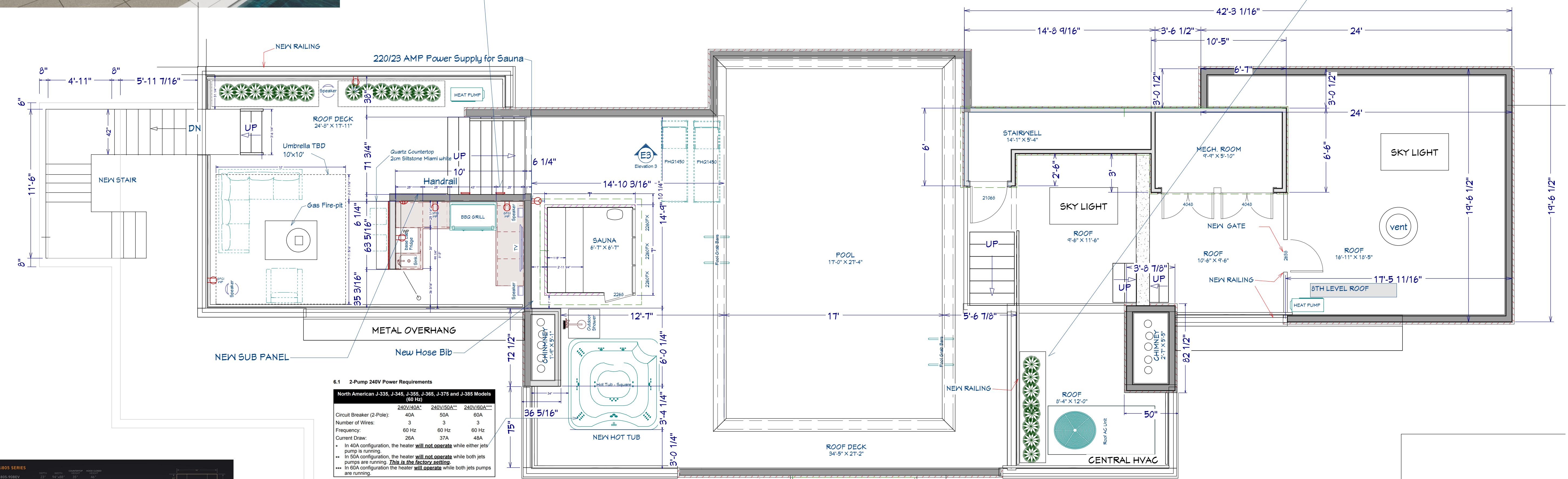
Sonic 3-in White LED Exterior Wall/Step Lights



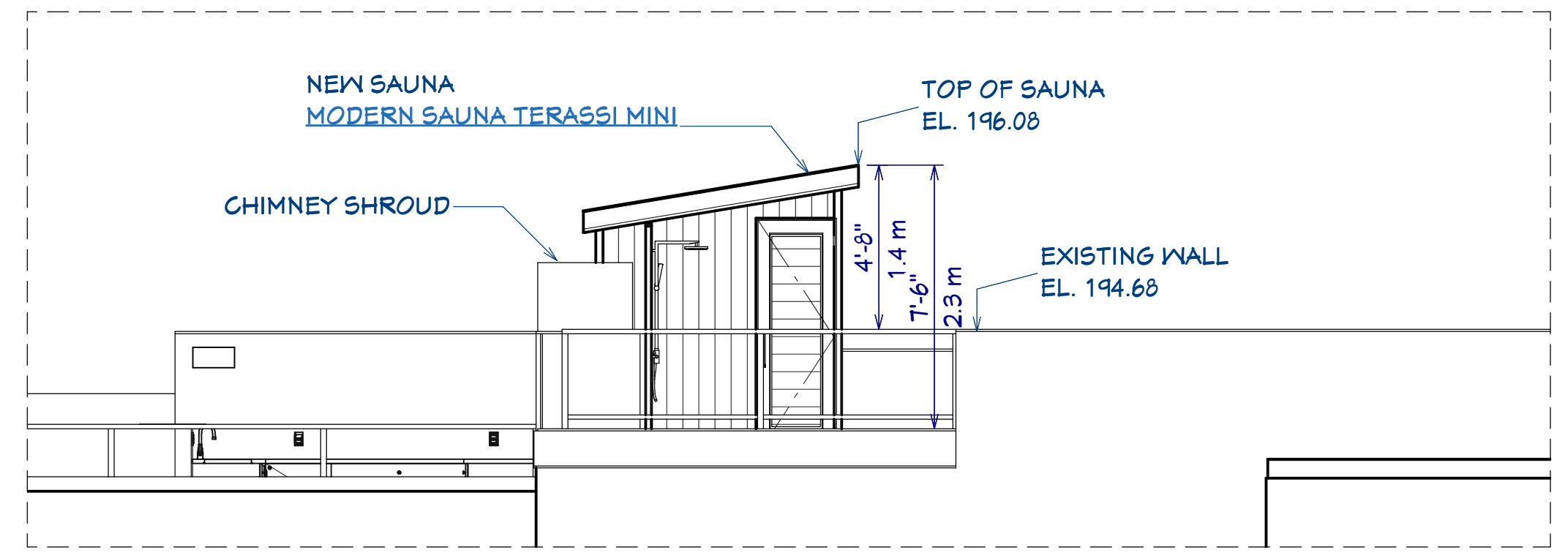
SAUNA Heater:
Model TBD
8.0 kw / 240 V
25 -60 AMP TBD



2'x 8' x 2' Metal Planter Box
- Irrigation
- up-lights
- 48" hedge Plant



Upper Penthouse Deck



Elevation 1



Model
J-335™

Seats 5-6 Lounge	Dimensions† Inches 84x84x36 Centimeters 214x214x92	Electrical* 240VAC 60Hz 40A/50A/60A 230VAC 50Hz 1x32A, 3x16A 1x20A/1x16A
------------------------	--	---

[HOW TO FILL THE JACUZZI and START LINK](#)
[MAINTENANCE LINK](#)

J-335 JACUZZI Platinum/Smoked Ebony

Electrical: North America (60 Hz): 240 VAC@40A, 50A, or 60A Export (50 Hz): 220-240 VAC@1x32A, 1x20A/1x16A, 3x16A, or suitably rated circuit breaker to comply with local electrical codes. Certain countries may require dual power inputs; two GFCI RCD Breakers are required for this configuration.

REVISION TABLE	NUMBER	DATE	REVISION BY	DESCRIPTION

3085 Deer Ridge Close

Minor Height Variance Request

DRAWINGS PROVIDED BY: Iman Khabiri
360 Dream Homes

DATE:

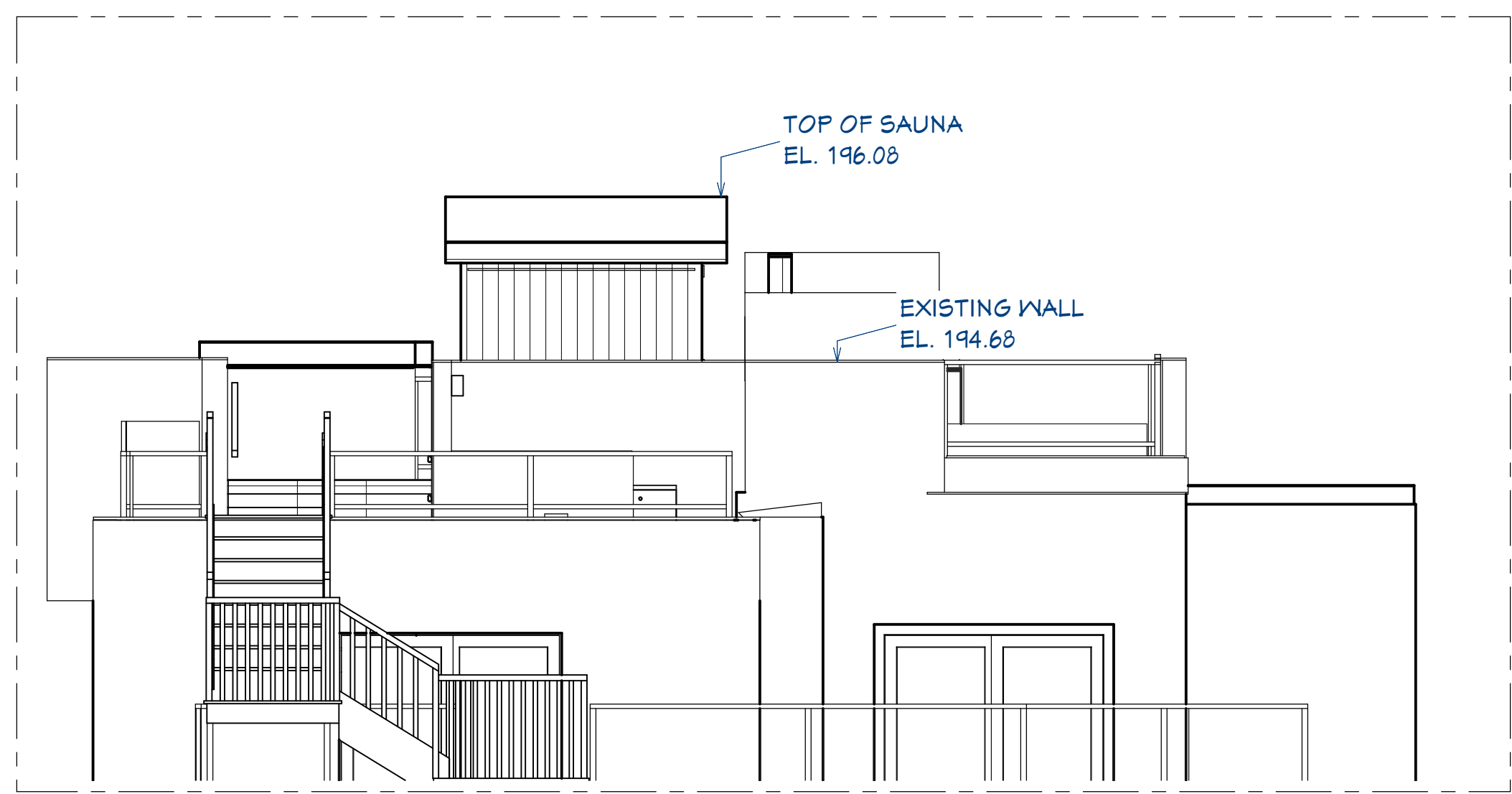
2026-05-22

SCALE:

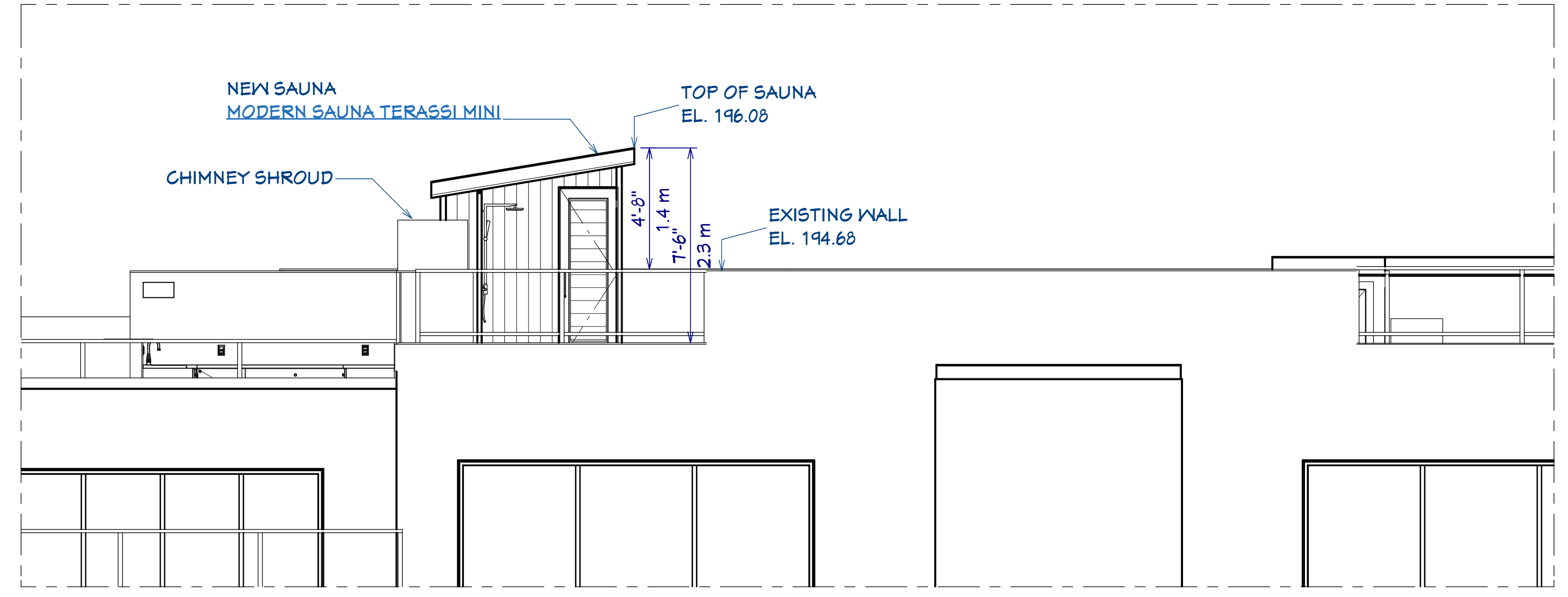
1/8" = 1'-0"

SHEET:

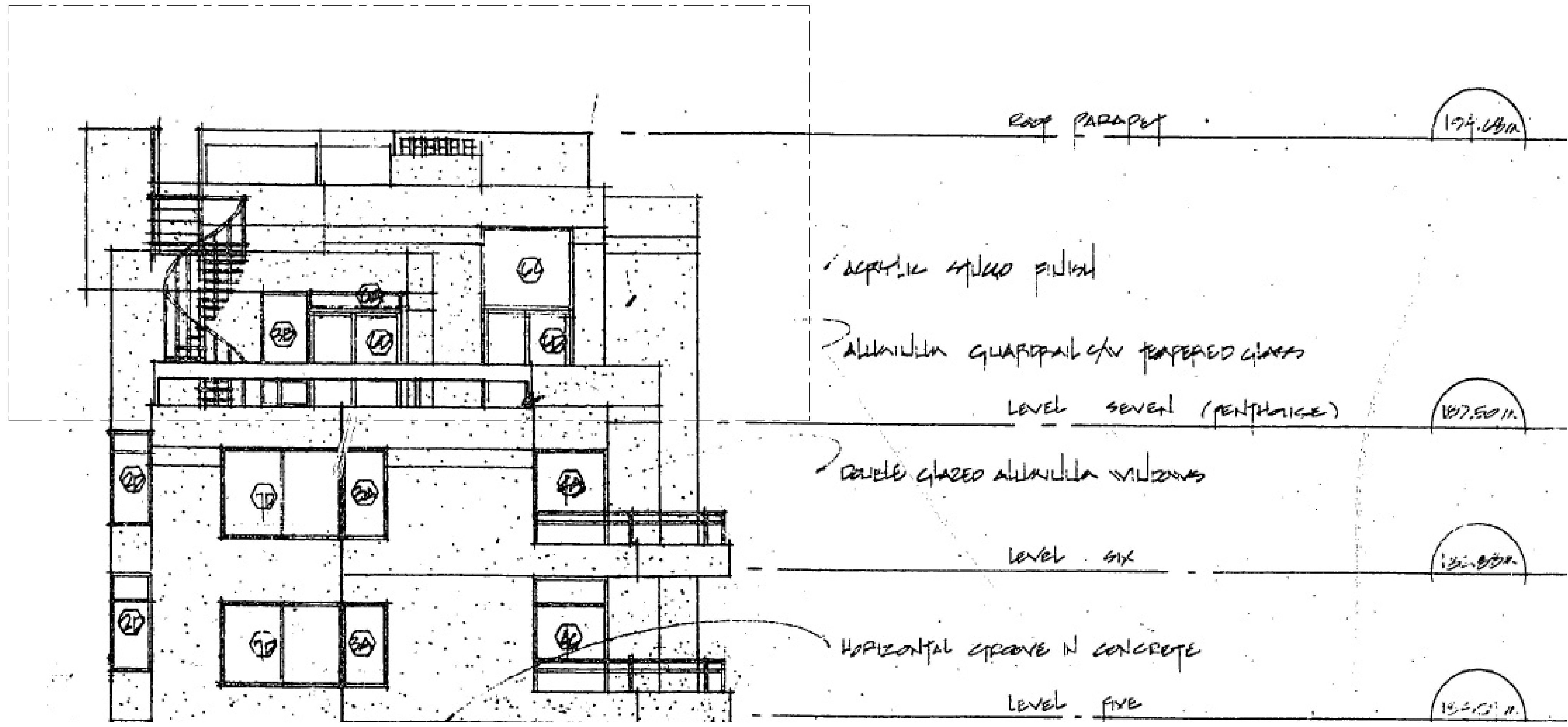
P-7



West Elevation - Proposed



South Elevation



West Elevation - Permitted

