

THE CORPORATION OF THE DISTRICT OF WEST VANCOUVER

ROAD EXCHANGE BYLAW NO. 4265, 2001

A bylaw to dispose of a portion of highway in exchange for land necessary for highway purposes

WHEREAS:

- A. Under section 525 of the *Local Government Act* Council may by bylaw dispose of a portion of a highway in exchange for land necessary for the purpose of improving, widening, straightening, relocating or diverting a highway;
- B. As required by section 527 of the *Local Government Act*, a notice of Council's intention to close the portion of highway required for this highway exchange was published in a newspaper at least 30 days before adoption of this bylaw and Council provided an opportunity for persons who consider they are affected by this bylaw to make representations to Council;
- C. As required by section 525 of the *Local Government Act*, a notice of Council's intention to undertake this highway exchange was published in a newspaper, once each week for two consecutive weeks;

NOW THEREFORE the Municipal Council of the Corporation of the District of West Vancouver, in open meeting assembled, enacts as follows:

- 1. Attached to this bylaw as Schedule "A" and forming part of this bylaw is a copy of a plan of highway exchange (the "Plan").
- 2. The District of West Vancouver hereby authorizes the disposition of those portions of highway (which were dedicated by Reference Plan 1958) totalling 1.3167 hectares shown hatched with diagonal lines on the Plan and marked as Closed Road (the "Closed Road") in exchange for those portions of those lands listed and legally described on the Plan totalling 0.9304 hectares shown outlined in heavy black on the Plan and marked as Road (the "New Road").
- 3. The Mayor and Clerk are hereby authorized to execute all deeds of land, plans and other instruments as are necessary to effect the aforesaid transfer and exchange of lands.
- 4. On deposit of the Plan and instruments necessary for the exchange of the Closed Road and the New Road in the Land Title Office:
 - (a) the Closed road is stopped up and closed to traffic and shall cease to be a public highway; and

(b) the New Road is dedicated and established as a public highway.

5. This bylaw shall be cited as the “Road Exchange Bylaw No. 4265, 2001”.

READ A FIRST TIME on July 23, 2001.

READ A SECOND TIME on September 10, 2001.

READ A THIRD TIME on September 10, 2001.

PUBLISHED on August 08 and August 15, 2001.

ADOPTED by the Council on January 07, 2002.

[Original signed by Mayor]

Mayor

[Original signed by Municipal Clerk]

Municipal Clerk

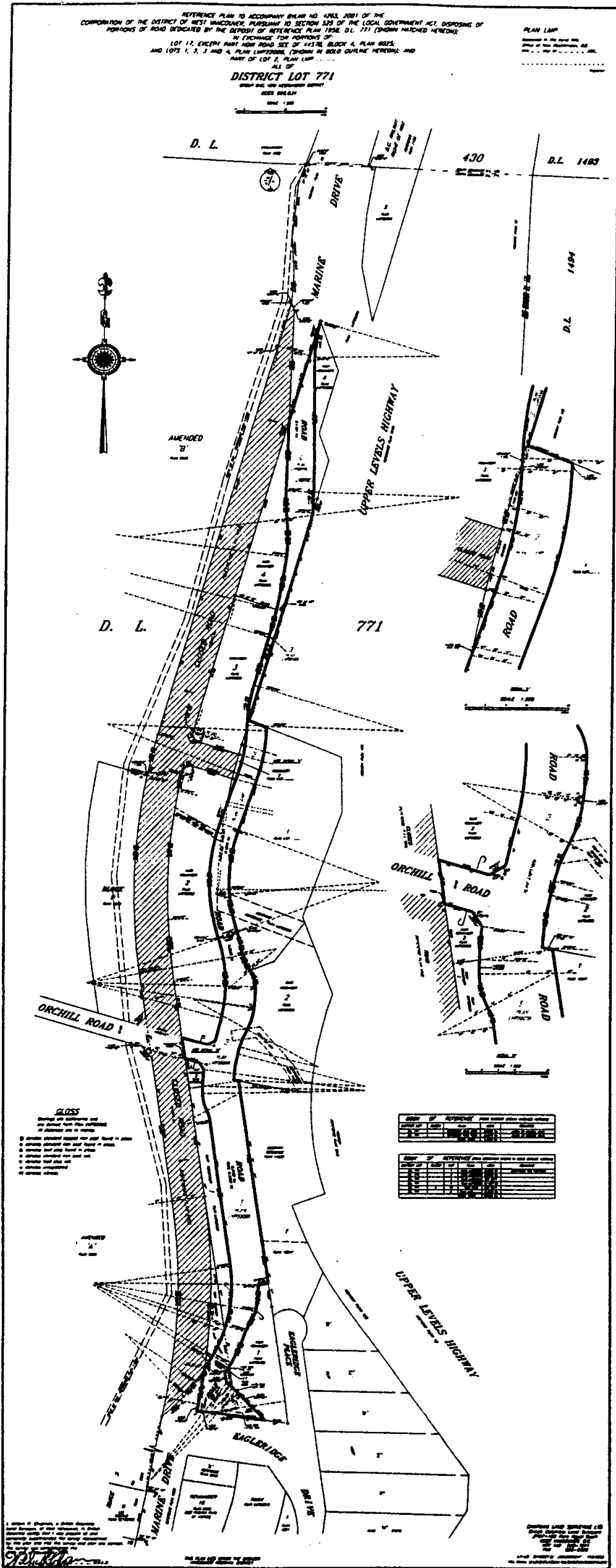
REFERENCE PLAN TO ACCOMPANY BY-LAW NO. 4363, 2001 OF THE CORPORATION OF THE DISTRICT OF WEST MICHIGAN, PURSUANT TO SECTION 530 OF THE LOCAL GOVERNMENT ACT, RESPECTING PORTIONS OF ROAD DEDICATED BY THE DEPOSIT OF REFERENCE PLAN 1958, D.L. 771 (SHOWN HATCHED HEREON) IN EXCHANGE FOR PORTIONS OF LOT 17, EXCEPT PART NOW ROAD SEE OF 4457th BLOCK A, PLAN 822, AND LOTS 1, 2, 3 AND 4, PLAN 1494, (SHOWN IN BOLD OUTLINE HEREON) AND PART OF LOT 3, PLAN LMP

DISTRICT LOT 771

ROAD DISTRICT

SCALE 1:500

PLAN LMP
 SHOWN IN BOLD OUTLINE
 PART OF LOT 3, PLAN LMP



- GLOSS**
- 1. Hatched area - Portion of road to be dedicated by the deposit of this plan.
 - 2. Bold outline - Portion of road to be dedicated by the deposit of this plan.
 - 3. Dotted line - Boundary of lot 17, except part now road see of 4457th Block A, Plan 822.
 - 4. Dotted line - Boundary of lots 1, 2, 3 and 4, Plan 1494.
 - 5. Dotted line - Boundary of part of lot 3, Plan LMP.
 - 6. Dotted line - Boundary of lot 17, except part now road see of 4457th Block A, Plan 822.
 - 7. Dotted line - Boundary of lots 1, 2, 3 and 4, Plan 1494.
 - 8. Dotted line - Boundary of part of lot 3, Plan LMP.

LIST OF AREAS AND LOTS TO BE DEDICATED BY THIS PLAN			
NO.	DESCRIPTION	AREA (SQ. FT.)	REMARKS
1	Portion of road to be dedicated by the deposit of this plan.		
2	Portion of road to be dedicated by the deposit of this plan.		

LIST OF AREAS AND LOTS TO BE DEDICATED BY THIS PLAN			
NO.	DESCRIPTION	AREA (SQ. FT.)	REMARKS
3	Boundary of lot 17, except part now road see of 4457th Block A, Plan 822.		
4	Boundary of lots 1, 2, 3 and 4, Plan 1494.		
5	Boundary of part of lot 3, Plan LMP.		
6	Boundary of lot 17, except part now road see of 4457th Block A, Plan 822.		
7	Boundary of lots 1, 2, 3 and 4, Plan 1494.		
8	Boundary of part of lot 3, Plan LMP.		

DATE OF DEPOSIT: 1958
 DRAWN BY: [Signature]
 CHECKED BY: [Signature]
 APPROVED BY: [Signature]