



District of West Vancouver

Road Closure and Removal of Highway Dedication Bylaw No. 4633, 2010

Effective Date: November 1, 2010

District of West Vancouver

Road Closure and Removal of Highway Dedication Bylaw No. 4633, 2010

Table of Contents

Part 1	Citation	2
Part 2	Severability	2
Part 3	Substantive Provisions	2
	Schedule A – Explanatory Plan of Highway Closure dated February 26, 2010	4

District of West Vancouver

Road Closure and Removal of Highway Dedication Bylaw No. 4633, 2010

A bylaw to close up and remove the dedication of a highway located at 23rd Street and Ottawa Avenue, West Vancouver

WHEREAS under the Community Charter a Council may close a highway to traffic, remove the dedication of a highway and dispose of municipal land; and

WHEREAS Council has posted and published notices of it's intention to close the highway referred to in this bylaw and remove its dedication, and has provided an opportunity for persons who consider they are affected to make representations to Council; and

WHEREAS Council does not consider that the closure will affect the transmission or distribution facilities or works of utility operators;

NOW THEREFORE, the Council of the District of West Vancouver enacts as follows:

Part 1 Citation

- 1.1 This bylaw may be cited as ROAD CLOSURE AND REMOVAL OF HIGHWAY DEDICATION Bylaw No. 4633, 2010.

Part 2 Severability

- 2.1 If a portion of this bylaw is held invalid by a Court of competent jurisdiction, then the invalid portion must be severed and the remainder of this bylaw is deemed to have been adopted without the severed section, subsequent, paragraph, subparagraph, clause or phrase.

Part 3 Substantive Provisions

- 3.1 Attached to this bylaw as Schedule “A” and forming part of this bylaw is a copy of an Explanatory Plan of highway closure (the “Plan”).
- 3.2 The portion of highway dedicated by Plan 2020 shown as Closed Road on the Plan is closed to all types of traffic.
- 3.3 The dedication as a highway of the Closed Road is removed.
- 3.4 The Mayor and Clerk are authorized to execute and deliver such transfers, deed of land, plans and other documents as are required to effect this road closure and removal of highway dedication.

Schedules

Schedule A – Explanatory Plan of Highway Closure dated February 26, 2010.

READ A FIRST TIME on March 1, 2010.

READ A SECOND TIME on March 1, 2010.

READ A THIRD TIME on March 1, 2010.

APPROVED BY THE MINISTER RESPONSIBLE FOR THE
TRANSPORTATION ACT ON August 9, 2010.

ADOPTED by the Council on November 1, 2010.

[Original signed by Mayor]

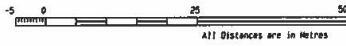
Mayor

[Original signed by Municipal Clerk]

Municipal Clerk

REFERENCE PLAN TO
 ACCOMPANY BYLAW 4633, 2010
 OF A PORTION OF ROAD,
 DEDICATED ON PLAN 2020
DISTRICT LOT 783

GROUP ONE, NEW WESTMINSTER DISTRICT
 BCGS 926.035
 SCALE 1:500



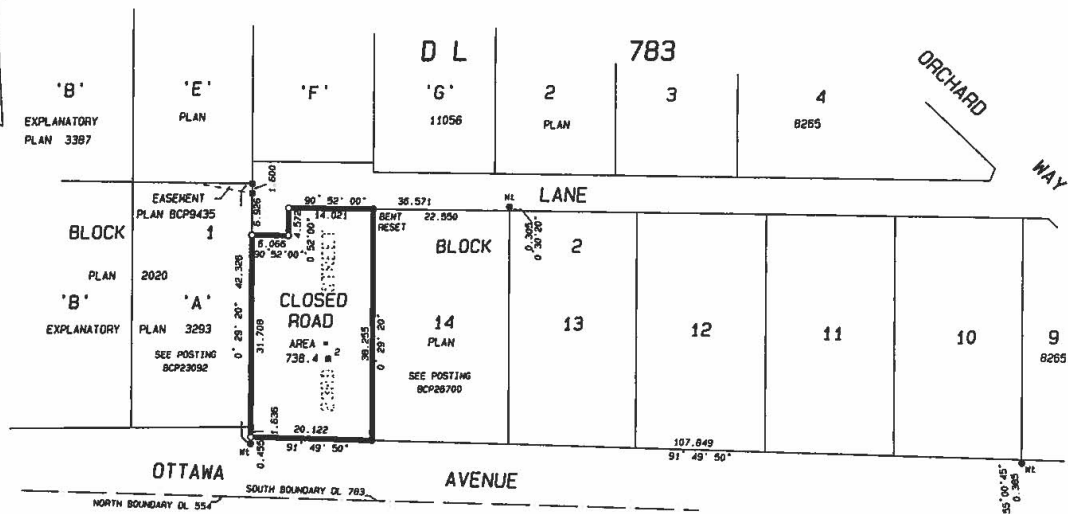
The intended plot size of this plan is
 432 mm in width by 560 mm in height
 (C size) when plotted at a scale of 1:500.

PURSUANT TO SECTION 40 OF THE COMMUNITY CHARTER
 AND SECTION 120 OF THE LAND TITLE ACT.

PLAN BCP

Deposited in the Land Title
 Office at New Westminster, B.C.
 this ___ day of _____ 201_.

 Registrar.



THIS PLAN LIES WITHIN THE GREATER
 VANCOUVER REGIONAL DISTRICT.

I, Harry E. Mickman, a British Columbia
 Land Surveyor, of West Vancouver, in British
 Columbia, certify that I was present at and
 personally superintended the survey represented
 by this plan, and that the survey and plan are
 correct. The field survey was completed on the
 23rd day of February, 2010. The plan was completed
 and checked, and the checklist filed under
 # 107387 on the 26th day of February, 2010.

[Signature]
 _____, B.C.L.S.

GLOSS

Bearings are astronomic and
 are derived from Plan BCP26700.
 All distances are in metres.

- denotes standard iron post found in place.
- denotes lead plug found in place.
- denotes standard iron post set.
- WT denotes witness.

CHAPMAN LAND SURVEYING LTD.
 British Columbia Land Surveyors
 # 107-100 Park Royal South
 WEST VANCOUVER, B.C.
 V7Y 1A2 604-926-7311
 FAX 604-926-6923

E4/E5 BODK 2205 (22) JOB: 09157 FILE: 27800 COMP: 27800-RD.REF