



District of West Vancouver

**26th Street & Marine Drive - Road Closure
and
Removal of Highway Dedication
Bylaw No. 4727, 2012**

Effective Date – October 15, 2012

District of West Vancouver

26th Street & Marine Drive - Road Closure and Removal of Highway Dedication Bylaw No. 4727, 2012

A bylaw to close up and remove the dedication of a highway

WHEREAS under the *Community Charter* a Council may close a highway to traffic, remove the dedication of a highway and dispose of municipal land;

WHEREAS the Council of the District of West Vancouver deems it expedient to provide for the closure to traffic and removal of the dedication of that portion of the unimproved dedicated lane allowance located at 26th Street at Marine Drive as more particularly described in this Bylaw;

WHEREAS Council has posted and published notices of its intention to close the highway referred to in this bylaw and remove its dedication, and has provided an opportunity for persons who consider they are affected to make representations to Council;

NOW THEREFORE, the Council of the District of West Vancouver enacts as follows:

Part 1 Citation

- 1.1 This bylaw may be cited as Road Closure and Removal of Highway Dedication Bylaw No. 4727, 2012.

Part 2 Substantive Provisions

- 2.1 Attached to this bylaw as Schedule "A" and forming part of this bylaw is a copy of a Reference Plan of highway closure (the "Plan").
- 2.2 The portion of highway dedicated by Plan 3035 labelled as "Lot 'A'" and outlined in bold black on the Plan is closed to all types of traffic (the "Closed Road").

- 2.3 The dedication as a highway of the Closed Road is removed.
- 2.4 The Mayor and Clerk are authorized to execute and deliver such transfers, deeds of land, plans and other documents as are required to effect this closure and removal of highway dedication.

Schedules

Schedule A – Reference Plan of Highway Closure dated May 31, 2012.

READ A FIRST TIME on July 9, 2012

READ A SECOND TIME on July 9, 2012

READ A THIRD TIME on July 9, 2012

ADOPTED by the Council on October 15, 2012

[Original signed by Mayor]

Mayor

[Original signed by Municipal Clerk]

Municipal Clerk

Schedule "A" - Reference Plan of Highway Closure

**REFERENCE PLAN TO ACCOMPANY THE CORPORATION OF THE
DISTRICT OF WEST VANCOUVER ROAD CLOSING BYLAW No. _____
OF PART OF DISTRICT LOT 555, GROUP ONE,
NEW WESTMINSTER DISTRICT, DEDICATED ROAD ON PLAN 3035**

PLAN BCP _____

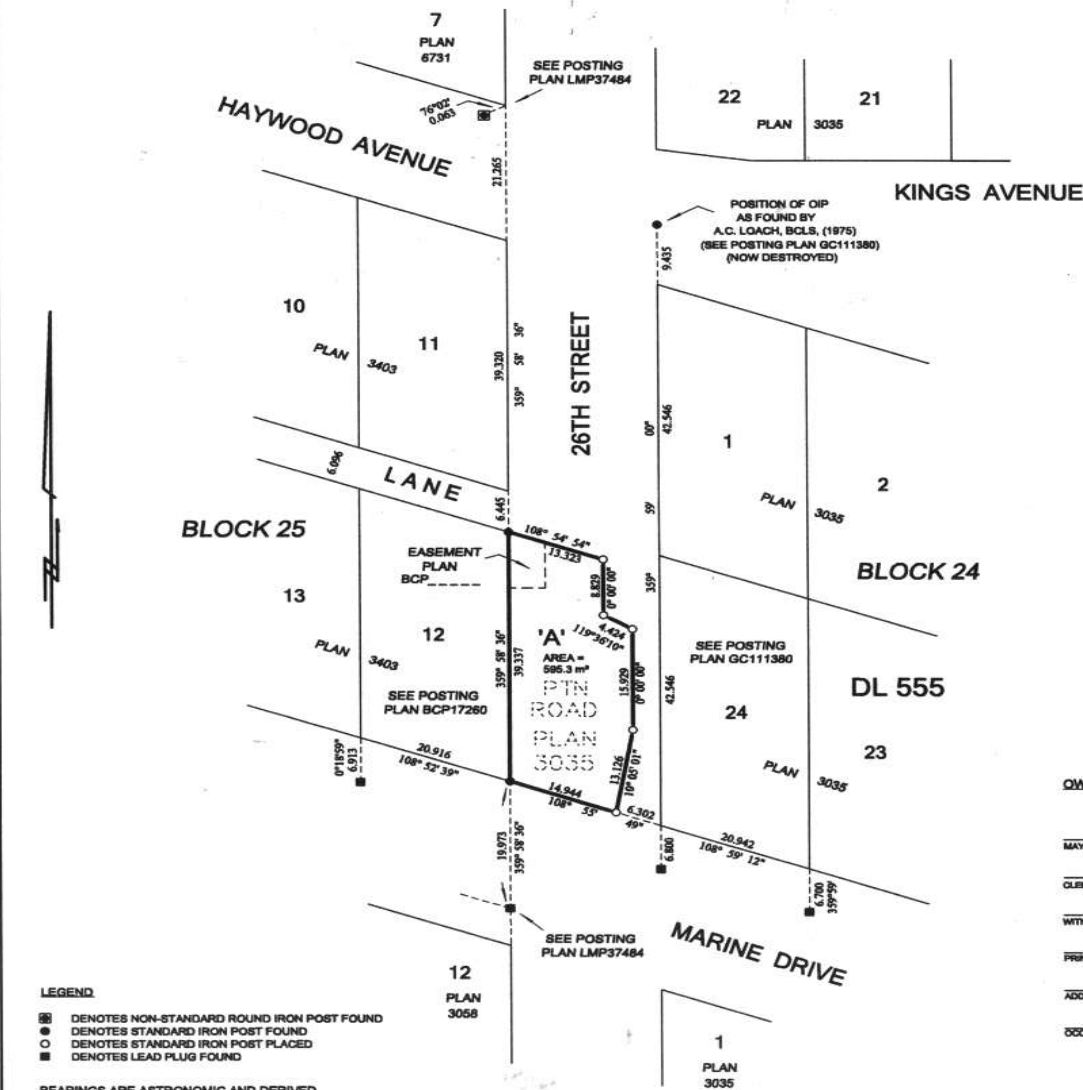
DEPOSITED IN THE LAND TITLE OFFICE AT
NEW WESTMINSTER, B.C., THIS _____ DAY OF _____
20 ____

PURSUANT TO SECTION 120 OF THE LAND TITLE ACT AND
SECTION 40 OF THE COMMUNITY CHARTER

REGISTRAR

BCGS 92G035

0 5 10 20 30 40 50m
THE INTENDED PLOT SIZE OF THIS PLAN IS
432 mm IN WIDTH BY 580 mm IN HEIGHT (C SIZE)
WHEN PLOTTED AT A SCALE OF 1: 500
ALL DISTANCES ARE IN METRES OR DECIMALS THEREOF
UNLESS OTHERWISE NOTED



OWNER: THE CORPORATION OF THE DISTRICT OF WEST VANCOUVER

MAYOR _____ PRINT NAME _____

CLERK _____ PRINT NAME _____

WITNESS AS TO BOTH SIGNATURES _____

PRINT NAME _____

ADDRESS _____

OCCUPATION _____

LEGEND

- ⊗ DENOTES NON-STANDARD ROUND IRON POST FOUND
- DENOTES STANDARD IRON POST FOUND
- DENOTES STANDARD IRON POST PLACED
- DENOTES LEAD PLUG FOUND

BEARINGS ARE ASTRONOMIC AND DERIVED
FROM POSTING PLAN GC111380

I, P.C. MacDONALD, A BRITISH COLUMBIA LAND SURVEYOR, CERTIFY THAT
I WAS PRESENT AT AND PERSONALLY SUPERINTENDED THE SURVEY
REPRESENTED BY THIS PLAN, AND THAT THE SURVEY AND PLAN ARE CORRECT
THE FIELD SURVEY WAS COMPLETED ON THE 28TH DAY OF MAY, 2012
THE PLAN WAS COMPLETED AND CHECKED, AND THE CHECKLIST FILED
UNDER # 136777, ON THE 31ST DAY OF MAY, 2012

THIS PLAN LIES WITHIN THE
GREATER VANCOUVER REGIONAL DISTRICT

B.C.L.S.

HOBBS, WINTER & MacDONALD,
B.C. LAND SURVEYORS,
113-528 HARBOURSIDE DRIVE,
NORTH VANCOUVER, B.C. V7P 3R9
TEL. 604-866-1371 FAX 604-866-5294
EMAIL: admin@hwsurveys.com

012-841-811 (LOT 12)
2601 MARINE DRIVE
FB 2324 p.56-82
FB.2370 p.9-10 M 3118-17 WV