



District of West Vancouver

Park Dedication Bylaw No. 5367, 2025

(Regarding 12 Parks in West Vancouver)

Effective Date: April 14, 2025

District of West Vancouver

Park Dedication Bylaw No. 5367, 2025

Table of Contents

Part 1	Citation	1
Part 2	Severability	1
Part 3	Dedication of the District Lands	2
Part 4	Schedules.....	2
	Schedule A – Parcels Dedicated by this bylaw.....	4
	Schedule B – Plans depicting parks dedicated by this bylaw.	7

District of West Vancouver

Park Dedication Bylaw No. 5367, 2025

A bylaw to dedicate District-owned property in the District as park

WHEREAS pursuant to Section 30 of the *Community Charter*, a Council of a municipality may, by bylaw adopted by 2/3 of all members of Council, reserve or dedicate for a particular municipal or other public purpose real property owned by the municipality;

AND WHEREAS the Corporation of the District of West Vancouver (the “**District**”) is the registered owner of the real property described in Schedule A (the “**District Lands**”);

AND WHEREAS the District Lands not previously dedicated contain areas that warrant enhanced protection to preserve their environmental, aesthetic, and recreation benefits; and

AND WHEREAS Council of the District deems it appropriate to dedicate the District Lands for the park and public purposes as more particularly described in this Bylaw.

NOW THEREFORE Council, in open meeting assembled, by 2/3 majority, enacts as follows:

Part 1 Citation

1.1 This bylaw may be cited for all purposes as Park Dedication Bylaw No. 5367, 2025.

Part 2 Severability

2.1 If a portion of this bylaw is held invalid by a Court of competent jurisdiction, then the invalid portion must be severed, and the remainder of this bylaw is deemed to have been adopted without the severed section, subsection, paragraph, subparagraph, clause or phrase.

Part 3 Dedication of the District Lands

- 3.1** The District Lands, namely, those lands legally described in the attached Schedule A and depicted on the plans in Schedule B, are allocated, set aside and dedicated for park, recreation or community uses.
- 3.2** Despite the dedication in section 3.1, this bylaw expressly reserves the authority of Council of the District to adopt bylaws or undertake works within the District Lands that:
- (a) are consistent with the terms of any crown grant, statutory right of way, covenant, or other interest in land that is registered on any of the titles to the parcels comprising the District Lands as of the date of adoption of this bylaw;
 - (b) provide for new or expanded transportation and utility facilities, any other sanitary or storm sewerage works, water supply and distribution works, or any municipal utility whatsoever, together with all attachments, fittings and appurtenances thereto including, but not limited to, pipes, culverts, manholes, cleanouts, catch basins, outfalls including rip rap or other form of bank protection, ditches, swales, flumes, valves and valve boxes, hydrants, chambers, pumping stations, air vents, asphaltic or concrete pavement and all electrical, communication or other wiring and equipment convenient, necessary or beneficial to the community or that allow for enhanced access and services to the District Lands;
 - (c) are consistent with the terms of any permit to occupy or other agreement governing the use of the District Lands as of the date of adoption of this bylaw; or
 - (d) are within the contemplation of the District's bylaws, rules and regulations applicable to parks, as these bylaws, rules and regulations may be amended from time to time.

Part 4 Schedules

The following schedules are attached to and form part of this bylaw:

Schedule A – Parcels dedicated by this bylaw

Schedule B – Plans depicting parks dedicated by this bylaw.

READ A FIRST TIME on March 31, 2025

READ A SECOND TIME on March 31, 2025

READ A THIRD TIME on March 31, 2025

ADOPTED by an affirmative vote of at least 2/3 of all members of Council on
April 14, 2025

[Original signed by Mayor]

Mayor

[Original signed by Corporate Officer]

Corporate Officer

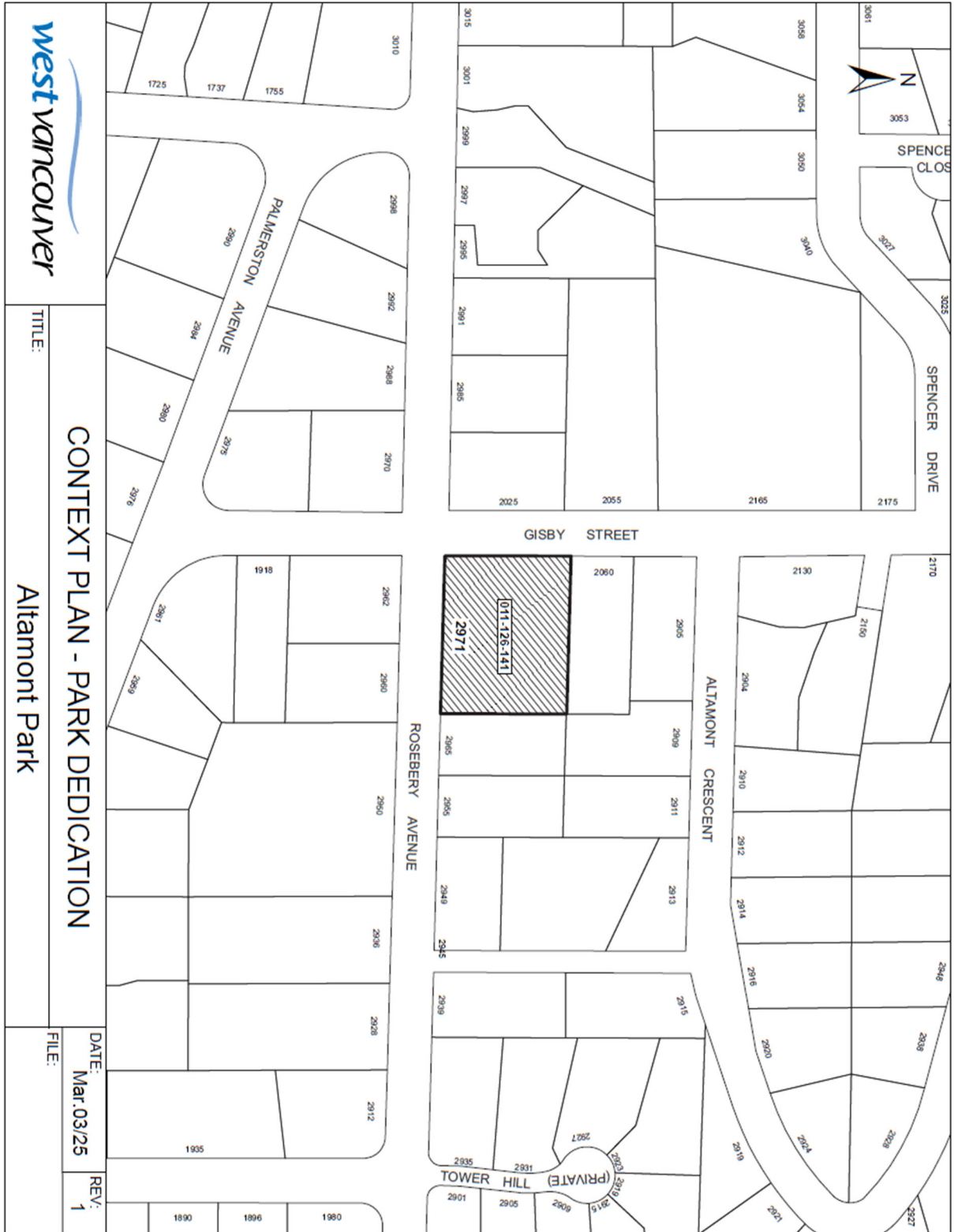
Schedule A – Parcels Dedicated by this bylaw

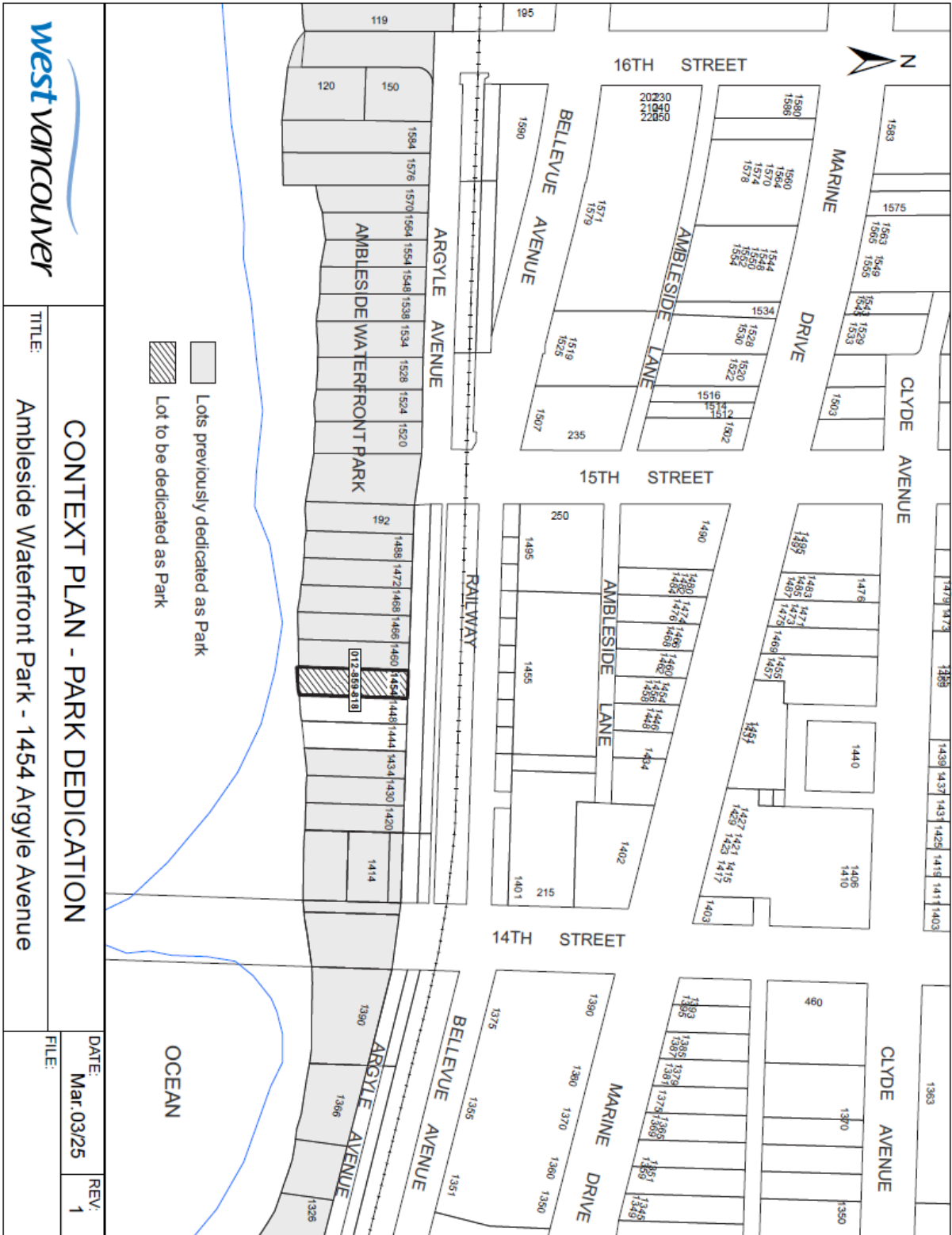
	Park Name	PID Number	Legal Description
1.	Altamont Park	011-126-141	LOT 2 BLOCK 6 OF BLOCK A DISTRICT LOT 815 PLAN 5542
2.	Ambleside Waterfront Park	012-859-818	LOT 7, EXCEPT PART IN REFERENCE PLAN 953, BLOCK 24 DISTRICT LOT 237 PLAN 3459
3.	Benbow Park	007-950-284	LOT A BLOCK 12 DISTRICT LOTS 557 AND 817 PLAN 14121
4.	Brissenden Waterfront (1448 Argyle) Park	012-859-834	LOT 8, EXCEPT PART IN REFERENCE PLAN 953, BLOCK 24 DISTRICT LOT 237 PLAN 3459
5.	Burley Drive Park	009-995-480	LOT P NORTH ½ OF DISTRICT LOT 1068 PLAN 8608
6.	Burley Drive Park	009-995-421	LOT O EXCEPT PART ON HIGHWAY PLAN 25 NORTH 1/2 OF DISTRICT LOT 1068 GROUP 1 NEW WESTMINSTER DISTRICT PLAN 8608
7.	Burley Drive Park	011-617-551	LOT 1, EXCEPT FIRSTLY: PART SHOWN OUTLINED RED ON HIGHWAY PLAN 113 SECONDLY: PART ON HIGHWAY PLAN 25, NORTH 1/2 OF DISTRICT LOT 1068 GROUP 1 NEW WESTMINSTER DISTRICT PLAN 4351
8.	Burley Drive Park	011-617-586	LOT 2 EXCEPT FIRSTLY: PART SHOWN OUTLINED REN ON HIGHWAY PLAN 113 SECONDLY: PART SHOWN ON HIGHWAY PLAN 25, NORTH 1/2 OF DISTRICT LOT 1068 GROUP 1 NEW WESTMINSTER DISTRICT PLAN 4351
9.	Burley Drive Park	011-617-624	LOT 3, EXCEPT FIRSTLY: THAT PART SHOWN OUTLINED RED ON HIGHWAY PLAN 113 SECONDLY: PART ON HIGHWAY PLAN 25 NORTH 1/2 OF DISTRICT LOT 1068 GROUP 1 NEW WESTMINSTER DISTRICT PLAN 4351
10.	Burley Drive Park	011-619-546	LOT 4 EXCEPT FIRSTLY: PART ON HIGHWAY PLAN 25, SECONDLY: PART ON STATUTORY RIGHT OF WAY PLAN 113, DISTRICT LOT 1068 GROUP 1 NEW WESTMINSTER DISTRICT PLAN 4351

11.	Burley Drive Park	011-617-667	LOT 5, EXCEPT FIRSTLY: THAT PART SHOWN OUTLINED REN ON HIGHWAY PLAN 113 SECONDLY: PART ON HIGHWAY PLAN 25, NORTH 1/2 OF DISTRICT LOT 1068 GROUP 1 NEW WESTMINSTER DISTRICT PLAN 4351
12.	Burley Drive Park	011-617-675	LOT 6, EXCEPT FIRSTLY: THAT PART SHOWN OUTLINED RED ON HIGHWAY PLAN 113 SECONDLY: PART ON HIGHWAY PLAN 25, NORTH 1/2 OF DISTRICT LOT 1068 GROUP 1 NEW WESTMINSTER DISTRICT PLAN 4351
13.	Burley Drive Park	009-583-475	LOT 1, EXCEPT PART SHOWN OUTLINED RED ON HIGHWAY PLAN 113 DISTRICT LOT 1069 PLAN 10205
14.	Burley Drive Park	009-583-505	LOT 2 DISTRICT LOT 1069 PLAN 10205
15.	Cross Creek Park	009-020-799	LOT 12 BLOCK 46 CAPILANO ESTATES EXTENSION NO. 7 PLAN 11873
16.	Douglas St Court (Horseshoe Bay)	014-049-082	LOT 11 BLOCK 37 DISTRICT LOT 430 PLAN 2103
17.	Douglas St Court (Horseshoe Bay)	014-049-104	LOT 12 BLOCK 37 DISTRICT LOT 430 PLAN 2103
18.	Douglas St Court (Horseshoe Bay)	014-049-147	LOT 13 BLOCK 37 DISTRICT LOT 430 PLAN 2103
19.	Dundarave Park	030-745-284	LOT 1 BLOCK 32 DISTRICT LOT 555 GROUP 1 NEW WESTMINSTER DISTRICT PLAN EPP86370
20.	Dundarave Park	030-745-322	LOT B BLOCK 31 DISTRICT LOT 555 GROUP 1 NEW WESTMINSTER DISTRICT PLAN EPP86371
21.	Kloutchman Park	011-318-911	BLOCK C DISTRICT LOT 811 PLAN 4763
22.	Kloutchman Park	011-319-259	BLOCK D DISTRICT LOT 811 PLAN 4763
23.	Nelson Canyon Park	008-877-378	BLOCK C, EXCEPT: PART ON HIGHWAY PLAN 118 DISTRICT LOT 1494 PLAN 12498
24.	Nelson Canyon Park	008-877-416	BLOCK D, EXCEPT PORTIONS IN REFERENCE PLAN 12508 AND HIGHWAY PLAN 118 DISTRICT LOT 1494 PLAN 12498

25.	Nelson Canyon Park	007-057-211	LOT A DISTRICT LOTS 1374 AND 1494 PLAN 19181
26.	Rabbit Lane Park	007-040-032	LOT R BLOCK 6 CAPILANO ESTATES PLAN 19262
27.	Tall Trees Park	007-075-910	LOT X BLOCK 1 DISTRICT LOT 771 PLAN 18802
28.	Tall Trees Park	007-076-169	LOT O BLOCK 1 DISTRICT LOT 771 PLAN 18801

Schedule B – Plans depicting parks dedicated by this bylaw.

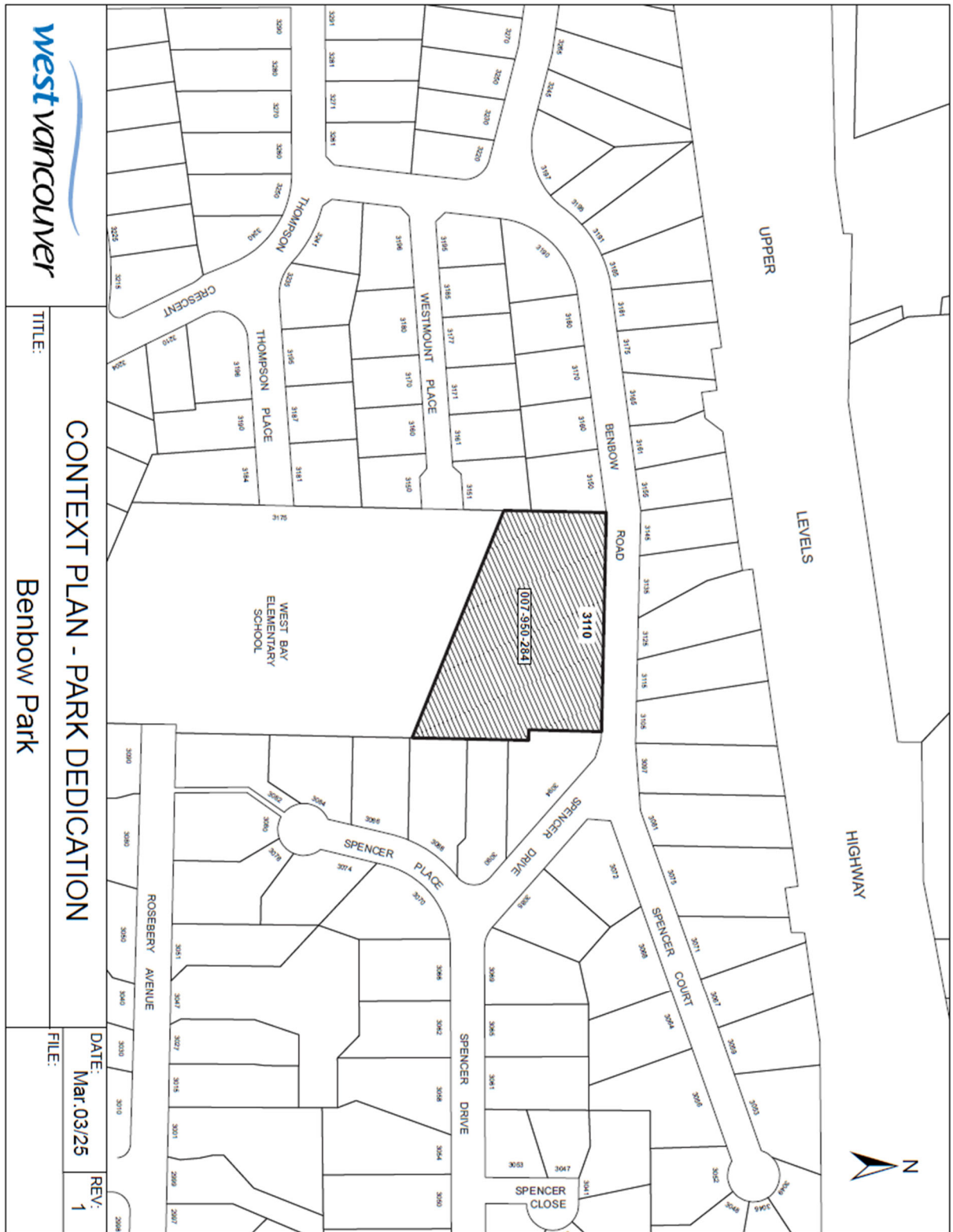


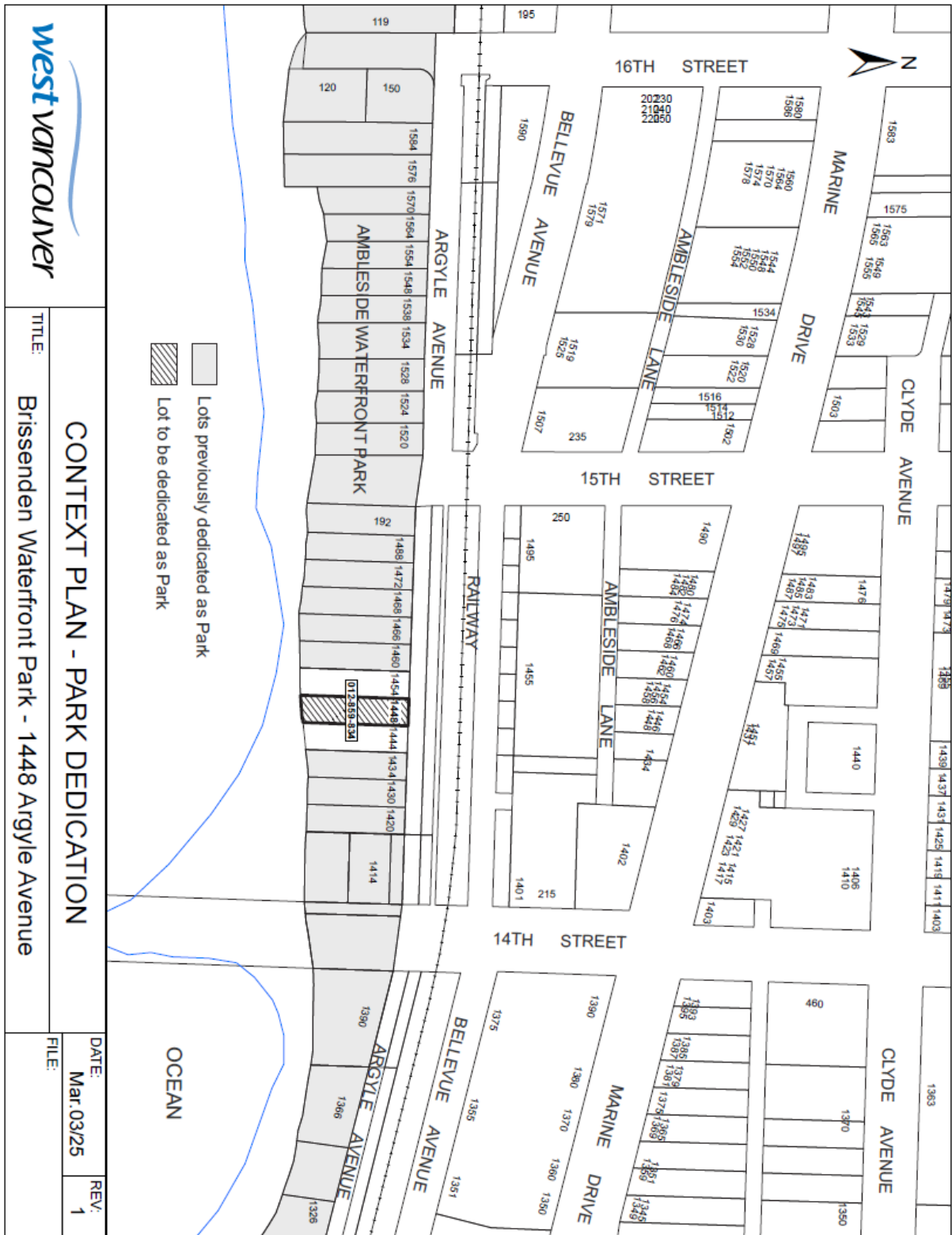


west vancover

TITLE: **Context Plan - Park Dedication**
 Ambleside Waterfront Park - 1454 Argyle Avenue

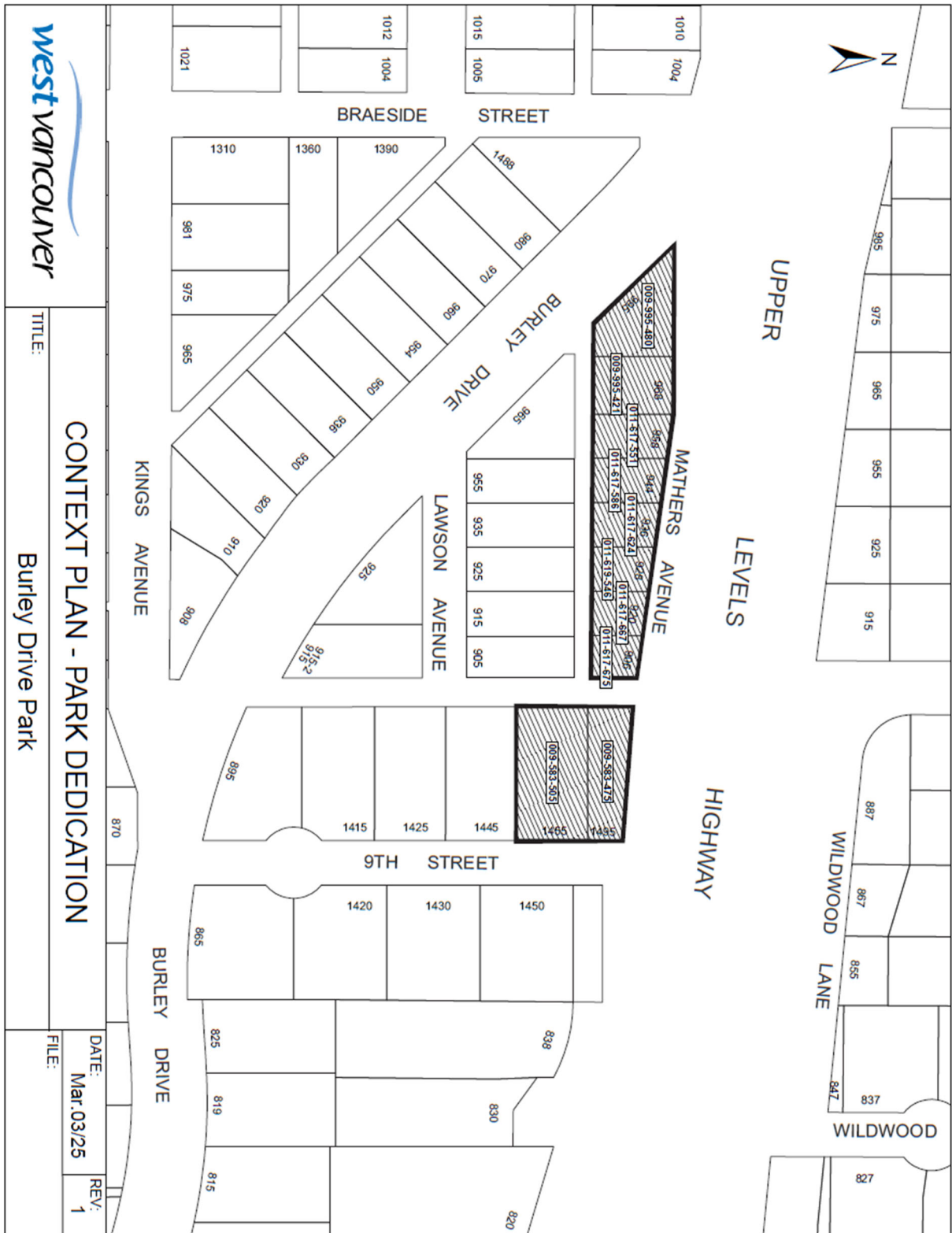
DATE: Mar.03/25
 REV: 1

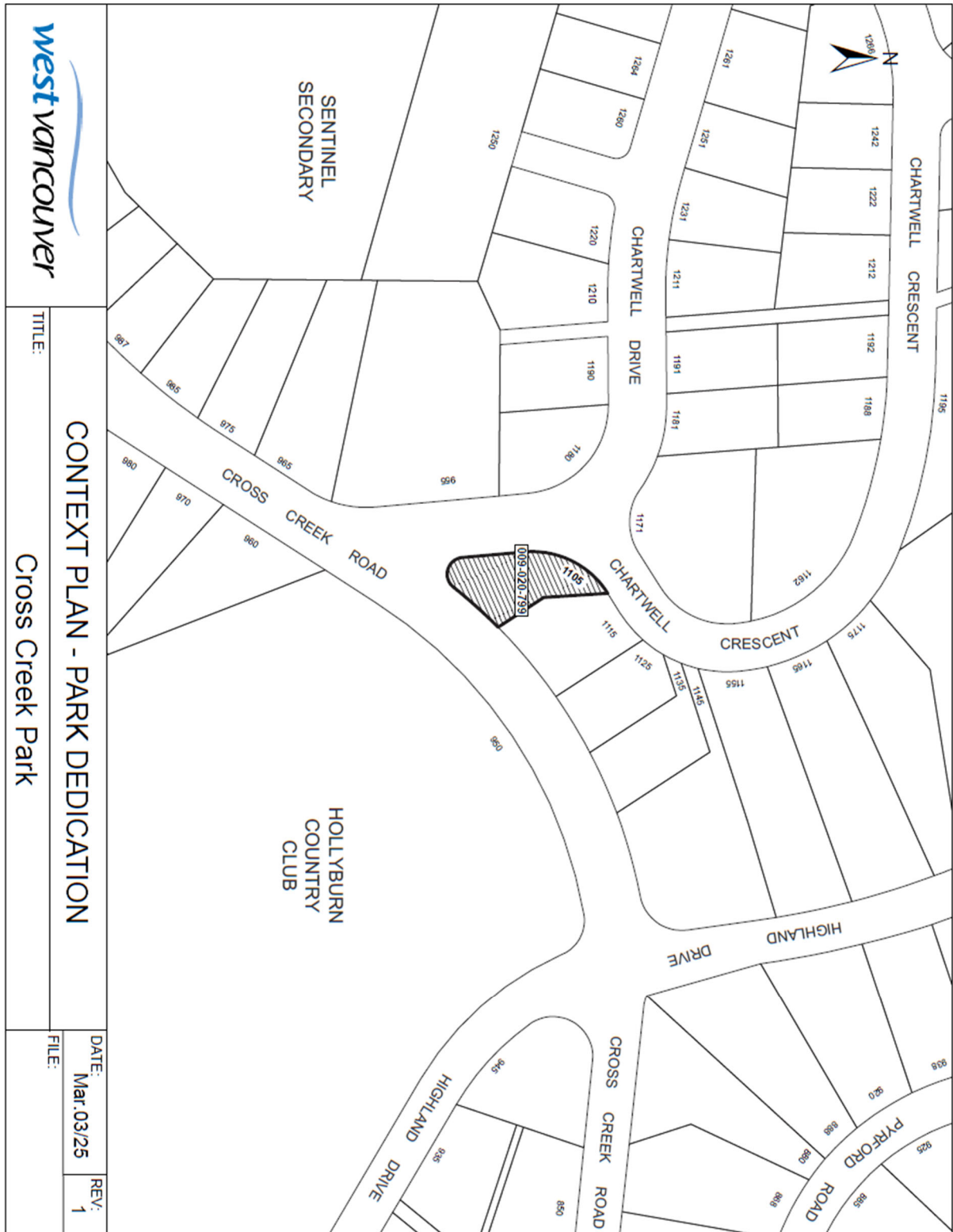




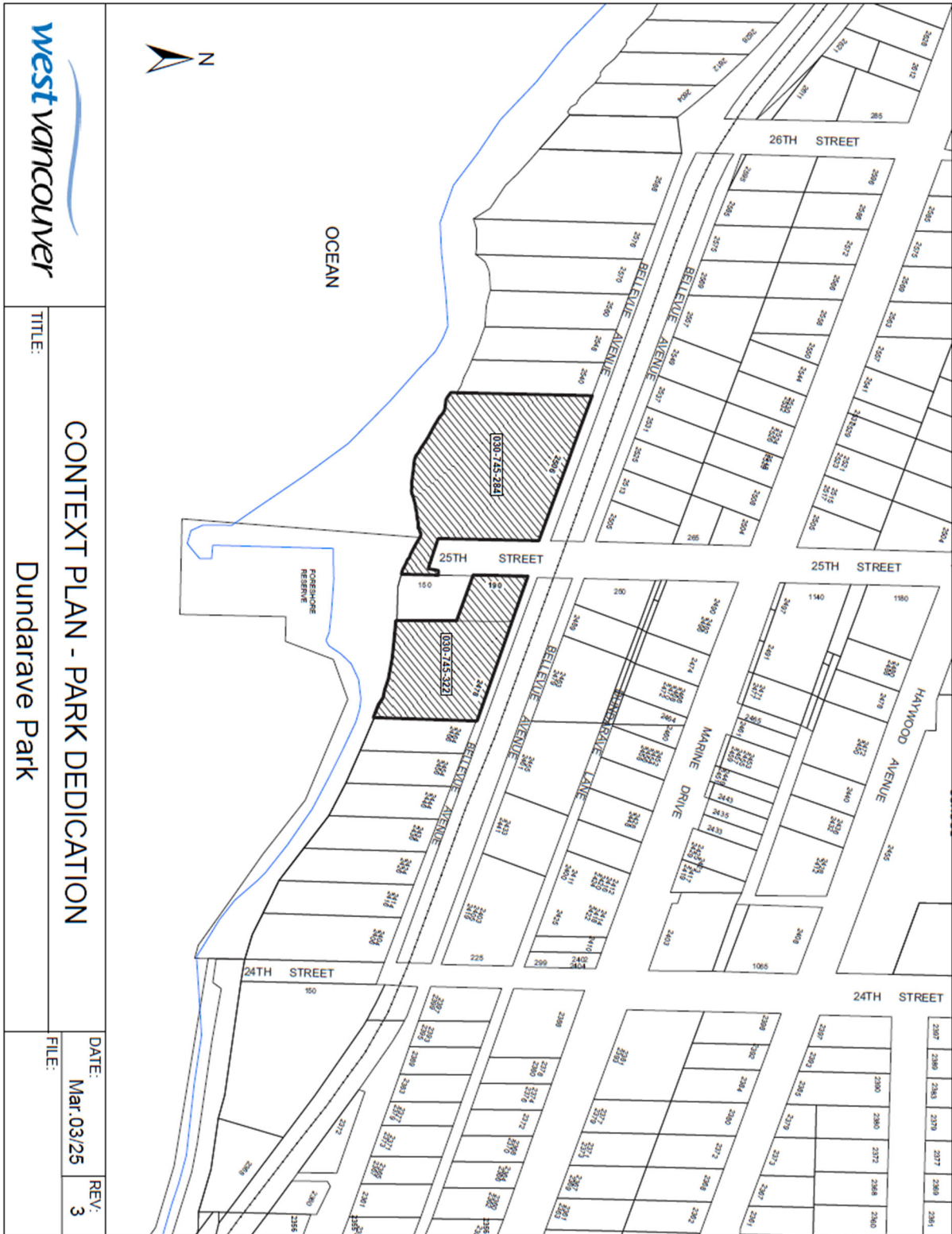
TITLE: **CONTEXT PLAN - PARK DEDICATION**
 Brissenden Waterfront Park - 1448 Argyle Avenue

DATE: Mar 03/25
 REV: 1









TITLE:

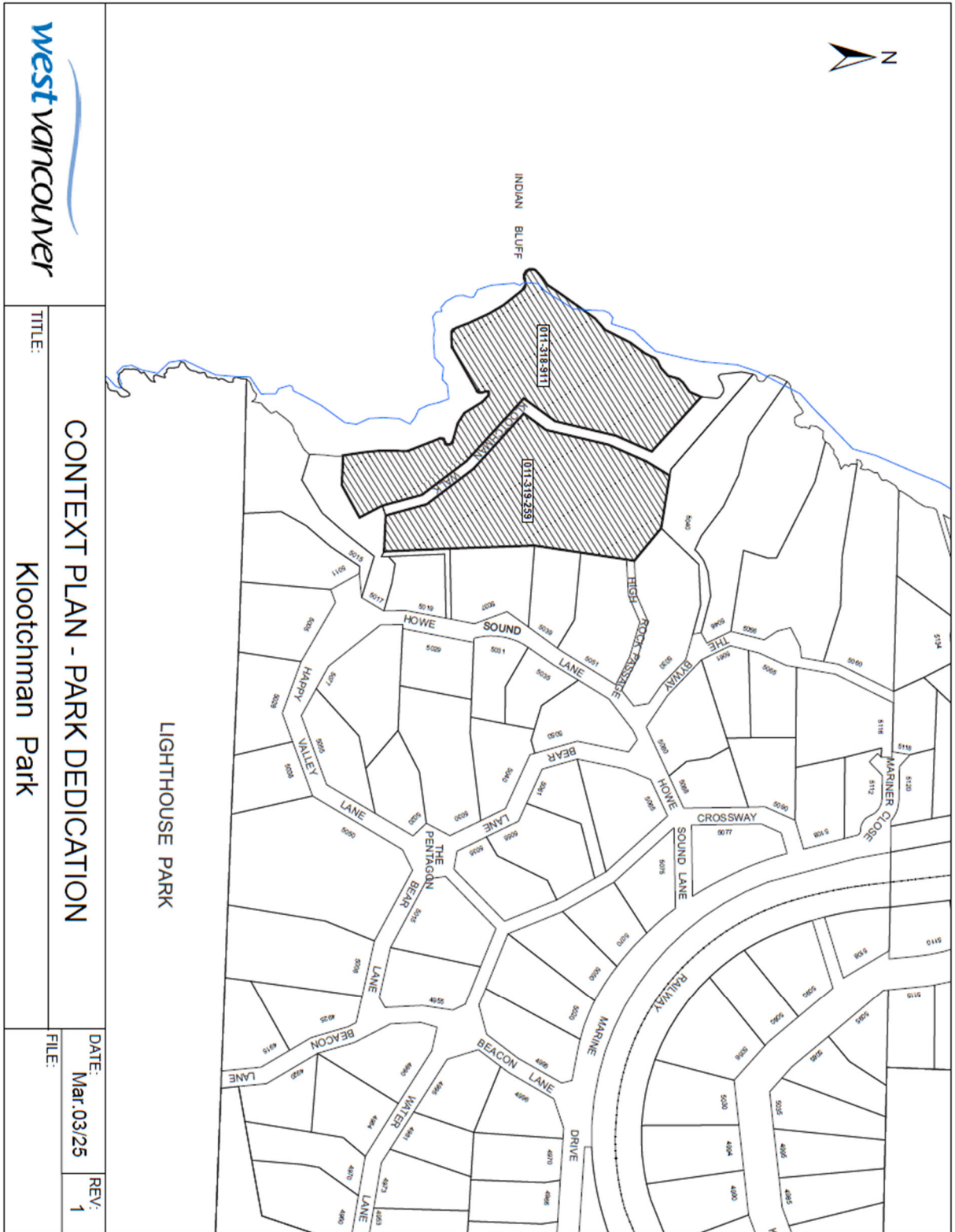
CONTEXT PLAN - PARK DEDICATION

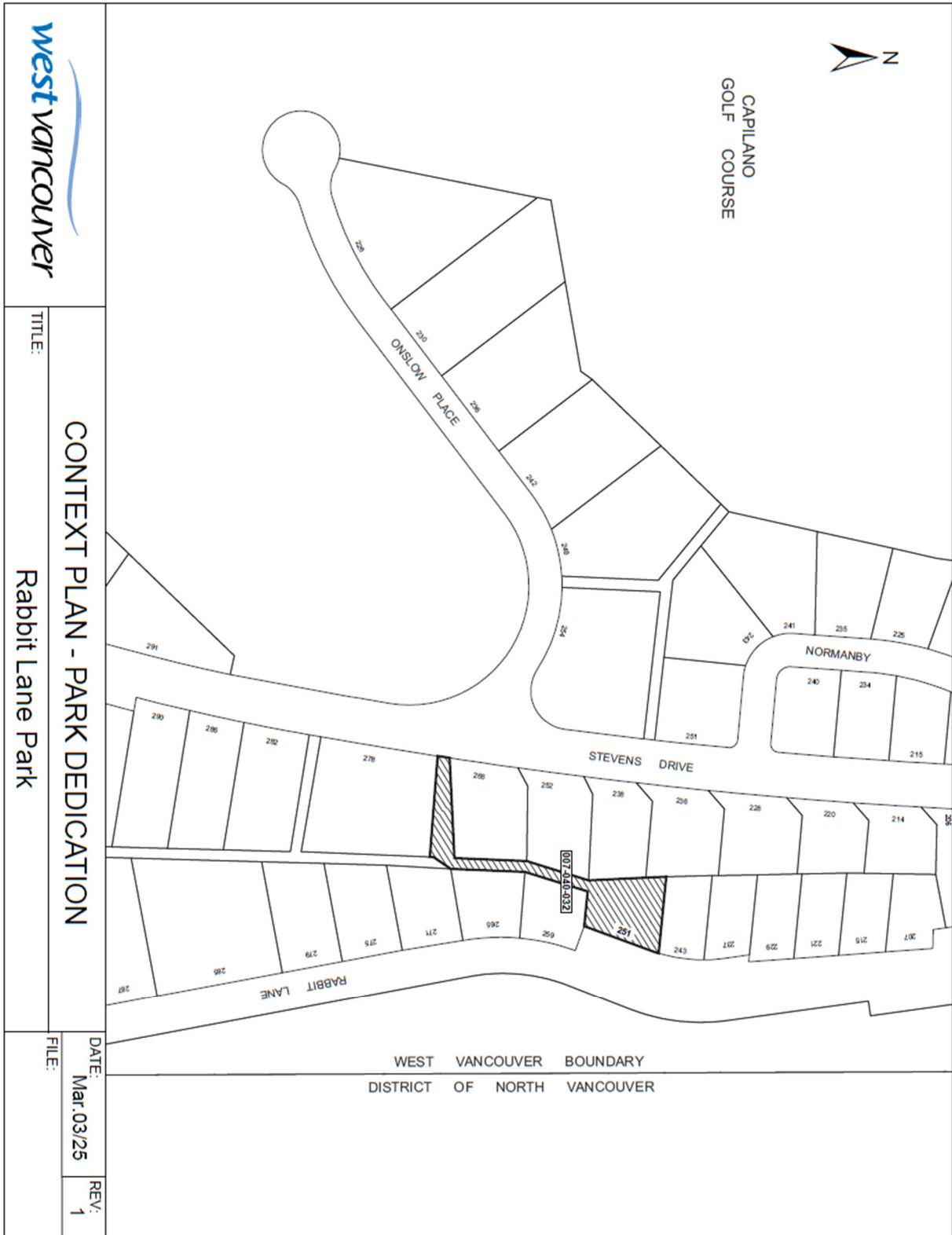
Dundarave Park

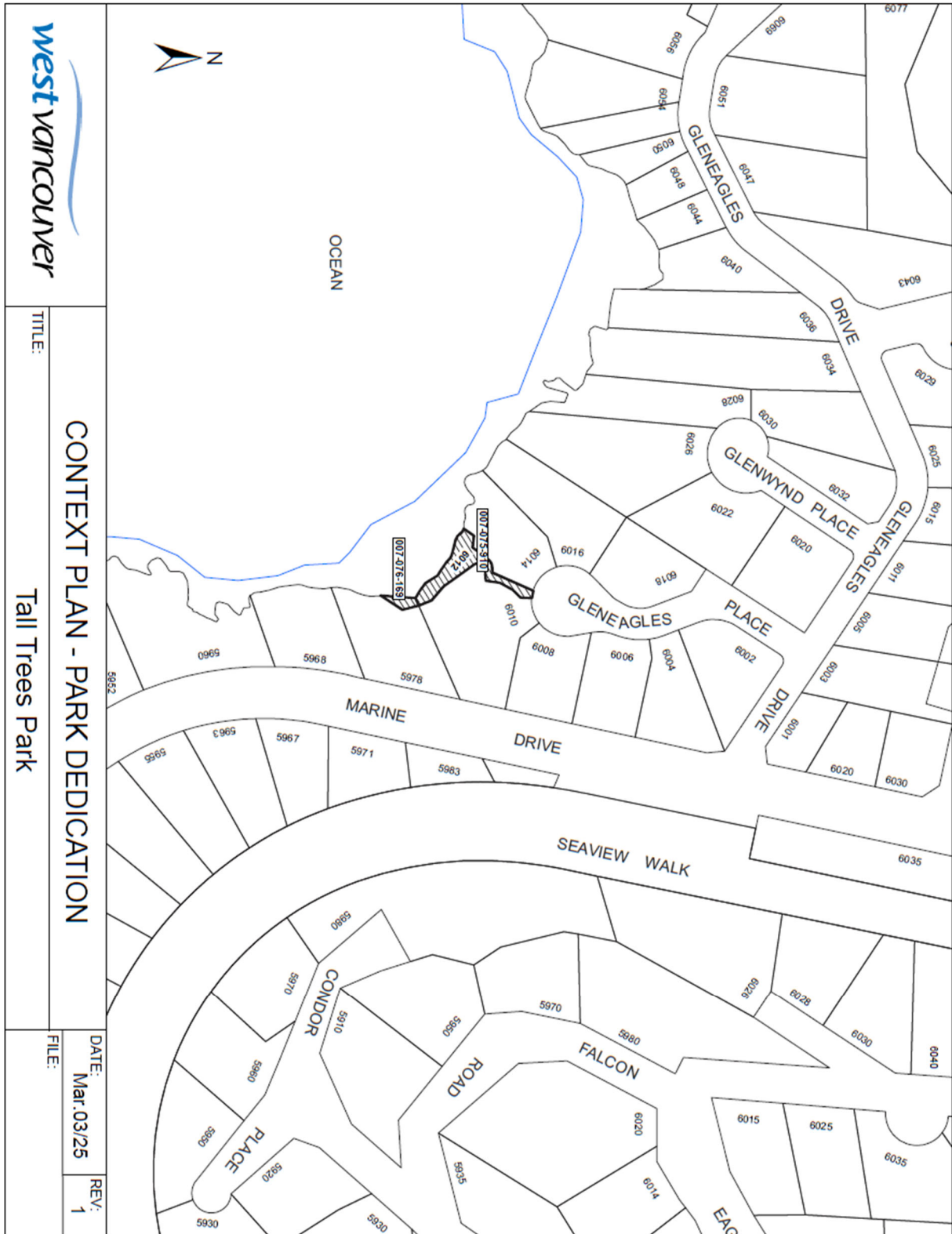
DATE:
Mar.03/25

REV:
3

FILE:







west vancouver

TITLE:

CONTEXT PLAN - PARK DEDICATION

Tail Trees Park

FILE:

DATE: Mar. 03/25

REV: 1