



District of West Vancouver

## **Park Dedication Bylaw No. 5424, 2026**

(Regarding 12 Parks in West Vancouver)

Effective Date: February 9, 2026

District of West Vancouver

# Park Dedication Bylaw No. 5424, 2026

## Table of Contents

---

Part 1	Citation .....	1
Part 2	Severability .....	1
Part 3	Dedication of the District Lands .....	1
	Schedule A – Parcels dedicated by this bylaw .....	4
	Schedule B – Plans depicting parks dedicated by this bylaw .....	6

District of West Vancouver

## **Park Dedication Bylaw No. 5424, 2026**

A bylaw to dedicate District-owned real property as park

WHEREAS pursuant to Section 30 of the *Community Charter*, a Council of a municipality may, by bylaw adopted by 2/3 of all members of Council, reserve or dedicate for a particular municipal or other public purpose real property owned by the municipality;

AND WHEREAS the Corporation of the District of West Vancouver (the “District”) is the registered owner of the real property described in Schedule A (the “District Lands”);

AND WHEREAS the District Lands not previously dedicated contain areas that warrant enhanced protection to preserve their environmental, aesthetic, and recreation benefits;

AND WHEREAS Council of the District deems it appropriate to dedicate this real property for the park and public purposes as more particularly described in this bylaw;

NOW THEREFORE Council, in open meeting assembled, by 2/3 majority, enacts as follows:

### **Part 1 Citation**

1.1 This bylaw may be cited as Park Dedication Bylaw No. 5424, 2026.

### **Part 2 Severability**

2.1 If a portion of this bylaw is held invalid by a Court of competent jurisdiction, then the invalid portion must be severed and the remainder of this bylaw is deemed to have been adopted without the severed section, subsection, paragraph, subparagraph, clause or phrase.

### **Part 3 Dedication of the District Lands**

3.1 The District Lands, being those lands and premises legally described in the attached Schedule A and depicted on the plans attached in Schedule B are allocated, set aside, and dedicated for park, recreation or community uses.

- 3.2 Despite the dedication in section 3.1, this bylaw expressly reserves the authority of Council of the District with respect to adopt bylaws or undertake works within the District Lands that:
- (a) are consistent with the terms of any Crown grant, statutory right of way, covenant, or other interest in land that is registered on any of the title to the parcels comprising the District Lands as of the date of adoption of this bylaw;
  - (b) provide for new or expanded transportation or utility facilities, any sanitary or storm sewerage works, water supply and distribution works, or any other similar telecommunication, municipal, or public utility infrastructure whatsoever type, together with all attachments, fittings and appurtenances thereto including, but not limited to, lines, wires, cables, pipes, culverts, manholes, cleanouts, catch basins, outfalls including rip rap or other form of bank protection, ditches, swales, flumes, valves and valve boxes, hydrants, chambers, pumping stations, air vents, asphaltic or concrete pavement and all electrical, communication or other wiring and equipment convenient, necessary or beneficial to the community or that allow for enhanced access and services to or in the vicinity of the District Lands;
  - (c) are consistent with the terms of any permit to occupy or other agreement governing the use of the District Lands as of the date of adoption of this bylaw; or
  - (d) are within the contemplation of the District's bylaws, rules and regulations applicable to parks, as these bylaws, rules and regulations may be amended from time to time.

## **Schedules**

The following schedule is attached to and forms part of this bylaw:

Schedule A – Parcels dedicated by this bylaw

Schedule B – Plans depicting parks dedicated by this bylaw

READ A FIRST TIME on January 26, 2026

READ A SECOND TIME on January 26, 2026

READ A THIRD TIME on January 26, 2026

ADOPTED by an affirmative vote of at least 2/3 of all members of Council on February 9, 2026.

*[Original signed by Mayor]*

---

Mayor

*[Original signed by Corporate Officer]*

---

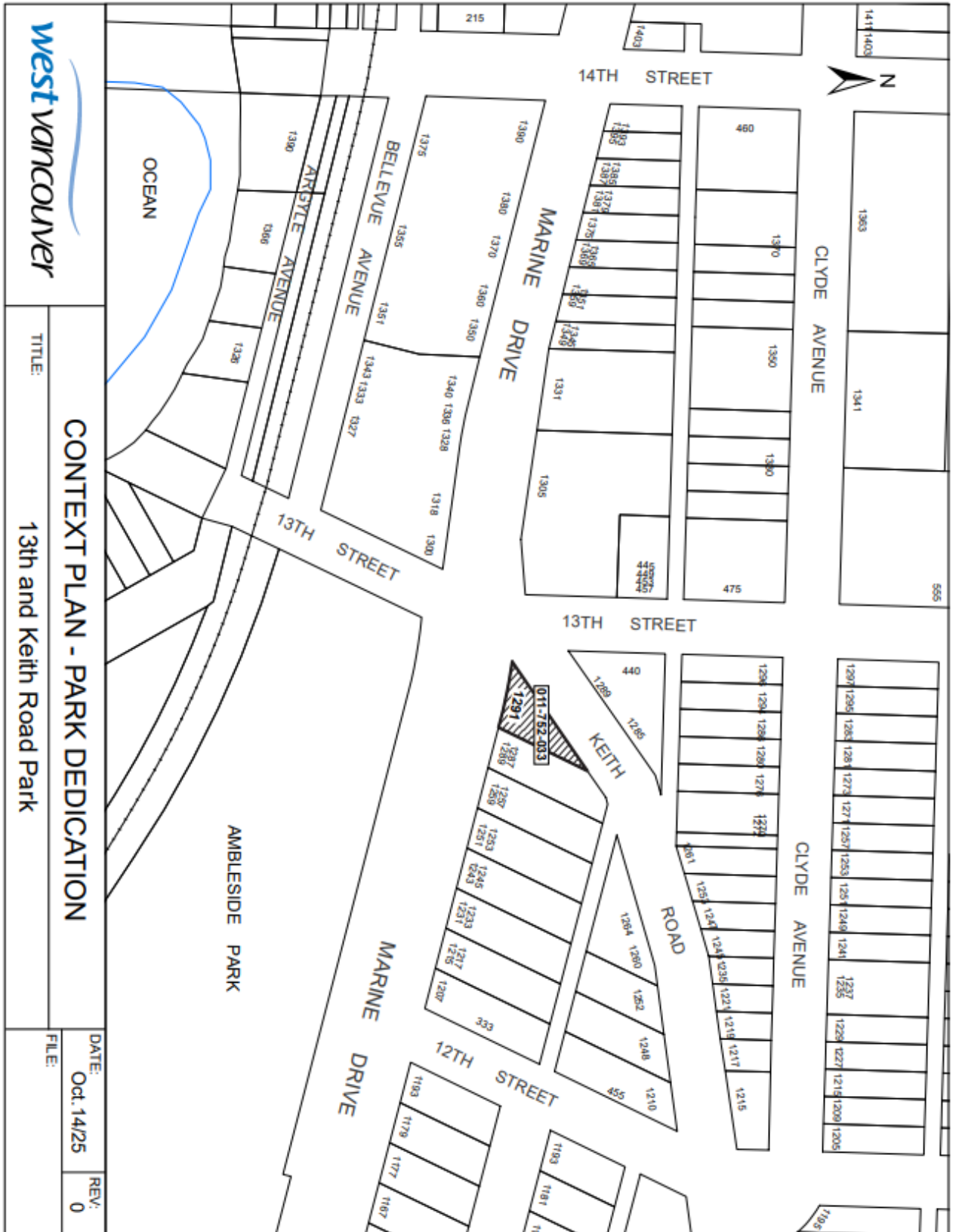
Corporate Officer

**Schedule A – Parcels dedicated by this bylaw**

	<b>Park Name</b>	<b>PID</b>	<b>Legal Description</b>
1.	13th & Keith Road Park	011-752-033	LOT 12 BLOCK 22 DISTRICT LOT 237 PLAN 4210
2.	Chartwell Park	008-911-231	LOT 26 BLOCK 47 CAPILANO ESTATES EXTENSION NO. 9 PLAN 12326
3.	Eagle Harbour Field (West Side)	007-198-612	LOT A DISTRICT LOT 773 PLAN 18225
		007-188-501	LOT 24 BLOCK B DISTRICT LOT 773 PLAN 18263
4.	Gleneagles Golf Course	011-008-784	AMENDED BLOCK B (SEE 390699L), EXCEPT: PART ON HIGHWAY PLAN 48 DISTRICT LOT 771 GROUP 1 NEW WESTMINSTER DISTRICT PLAN 6025
		011-008-725	AMENDED BLOCK A (SEE 172333L), EXCEPT PORTIONS IN LOTS 15 AND 16 BLOCK 3 PLAN 6025, DISTRICT LOT 771 PLAN 6025
		011-008-911	BLOCK 9 (SEE 172333L) DISTRICT LOT 771 PLAN 6025
5.	Horseshoe Bay Park	014-069-229	BLOCK AA DISTRICT LOT 430 PLAN 2103
		014-069-172	BLOCK 1 DISTRICT LOT 1493 PLAN 2103
6.	Larson Bay Park	011-008-849	BLOCK D DISTRICT LOT 771 PLAN 6025
7.	Addition to Memorial Park	011-249-170	LOT A BLOCK 4 DISTRICT LOT 775 PLAN 5023
		016-062-736	LOT A (REFERENCE PLAN 438) EXCEPT PART IN PLAN 5213 BLOCK 6 DISTRICT LOT 775 PLAN 814

8.	Parc Verdun	016-034-236	BLOCK C (REFERENCE PLAN 730), GROUP 1 NEW WESTMINSTER DISTRICT EXCEPT (A) PART IN REFERENCE PLAN 1956, (B) PORTIONS IN EXPLANATORY PLANS 1125 AND 14643 AND (C) PART IN PLAN 12412, DISTRICT LOT 879
9.	Addition to Seaview Walk Park	011-000-376	LOT 1 BLOCK 4 DISTRICT LOT 771 PLAN 6025
		011-000-384	LOT 2 BLOCK 4 DISTRICT LOT 771 PLAN 6025
		011-000-392	LOT 3 BLOCK 4 DISTRICT LOT 771 PLAN 6025
		011-000-406	LOT 4 BLOCK 4 DISTRICT LOT 771 PLAN 6025
10.	Westridge Park	015-960-218	LOT H (EXPLANATORY PLAN 9459) DISTRICT LOT 887 GROUP 1 NEW WESTMINSTER DISTRICT
11.	Whytecliff Park & Whyte Islet Park	015-822-044	DISTRICT LOT 5885 GROUP 1 NEW WESTMINSTER DISTRICT
		009-871-365	LOT A BLOCK 51 DISTRICT LOT 430 PLAN 8930
		009-871-403	LOT B BLOCK 51 DISTRICT LOT 430 PLAN 8930
12.	3 unnamed parcels in Caulfeild (containing Sahalee Trail)	017-172-179	LOT F DISTRICT LOTS 773 AND 879 PLAN VAP23208
		012-645-346	LOT 81 OF LOT E DISTRICT LOT 773 PLAN 22046
		007-044-801	LOT 16 BLOCK B DISTRICT LOT 879 PLAN 19025

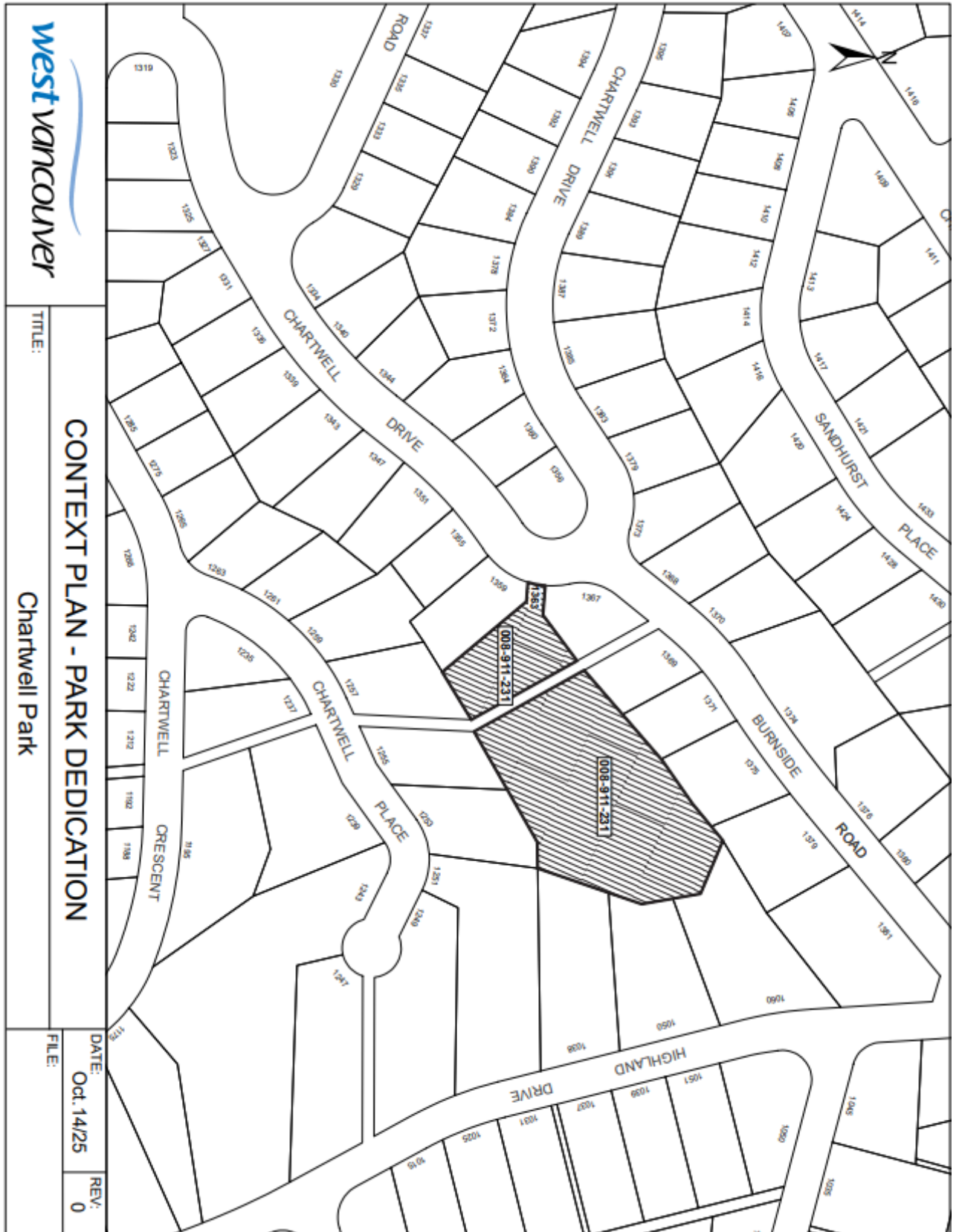
### Schedule B – Plans depicting parks dedicated by this bylaw

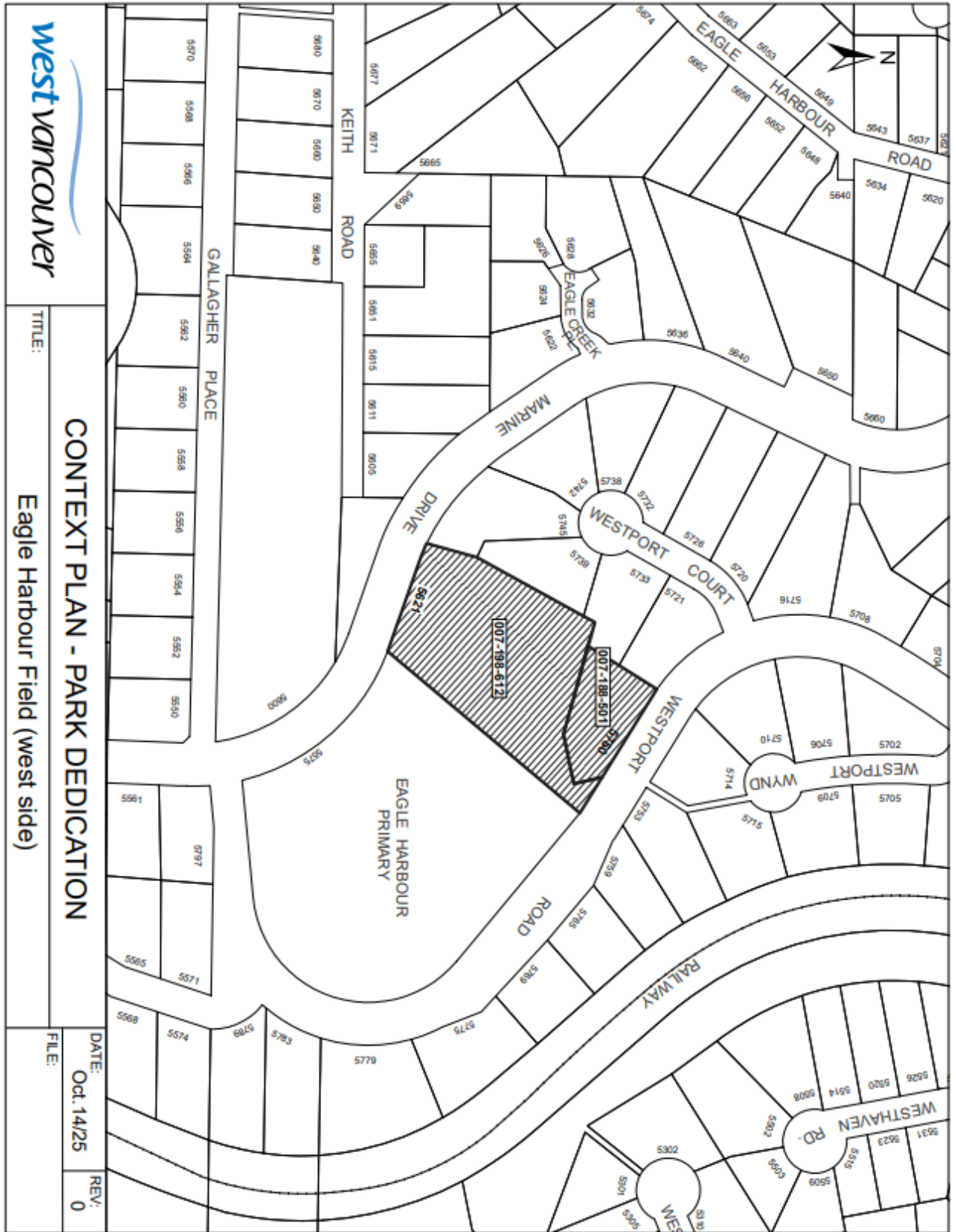


**westvancouver**

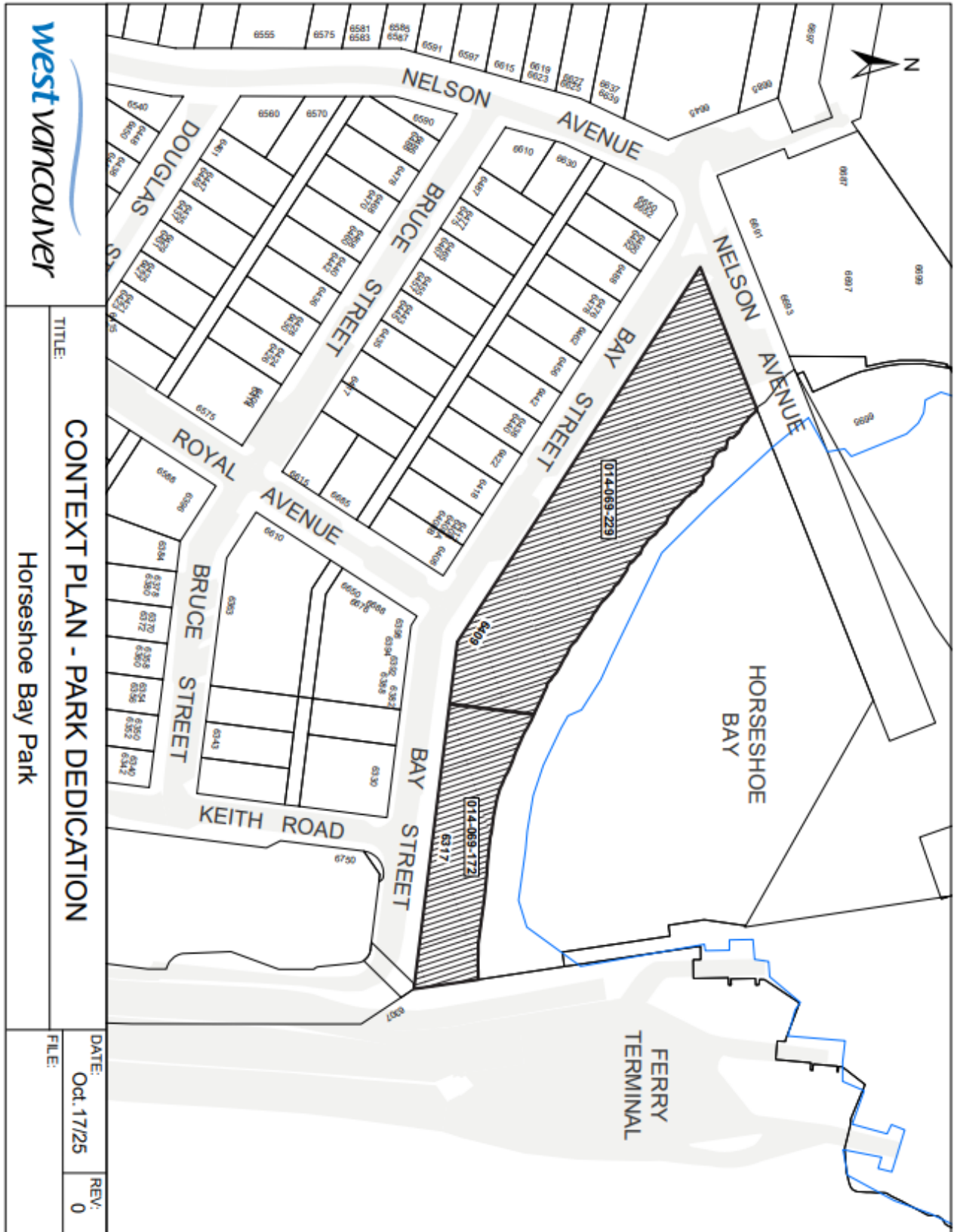
TITLE: **CONTEXT PLAN - PARK DEDICATION**  
13th and Keith Road Park

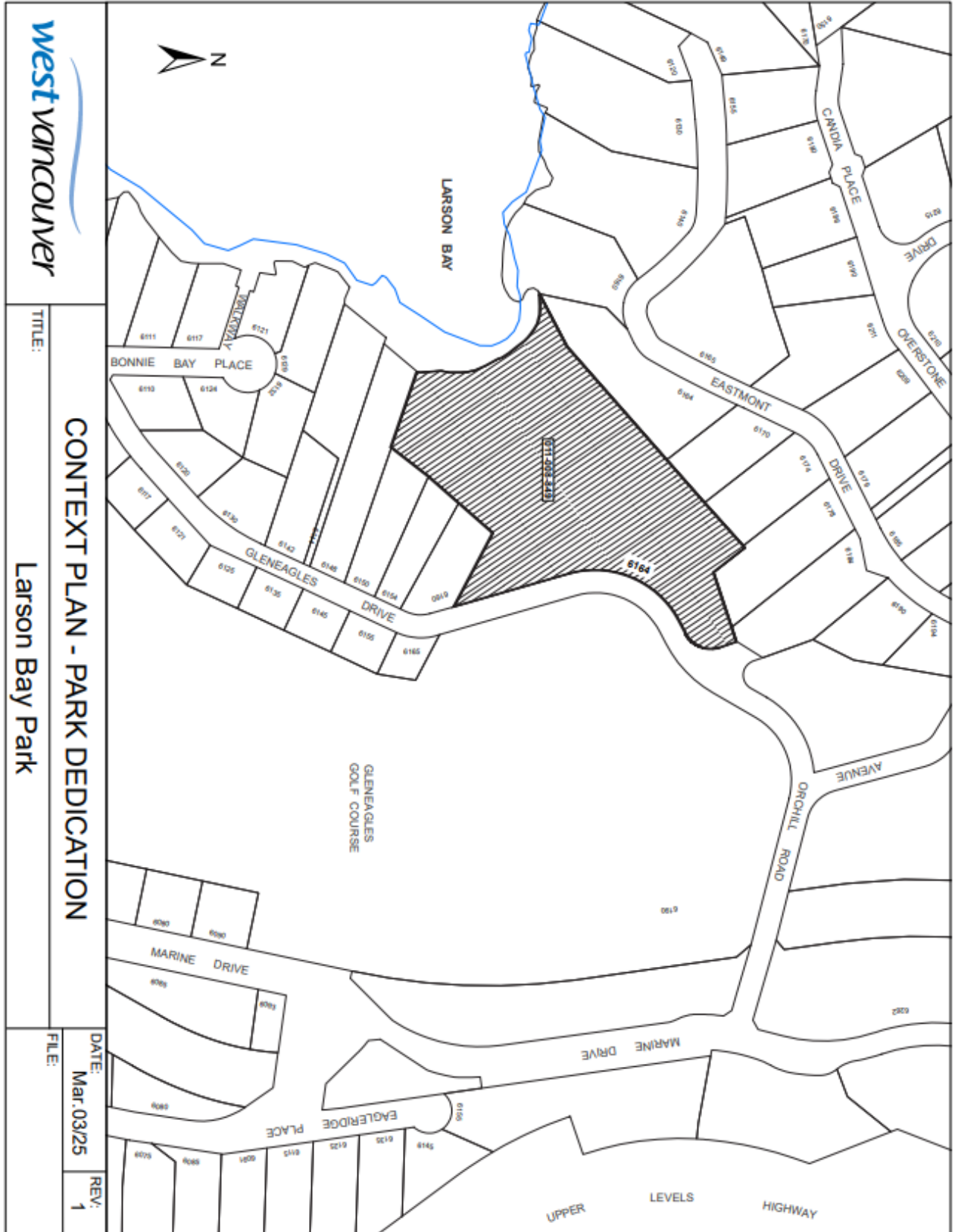
DATE: Oct. 14/25  
REV: 0

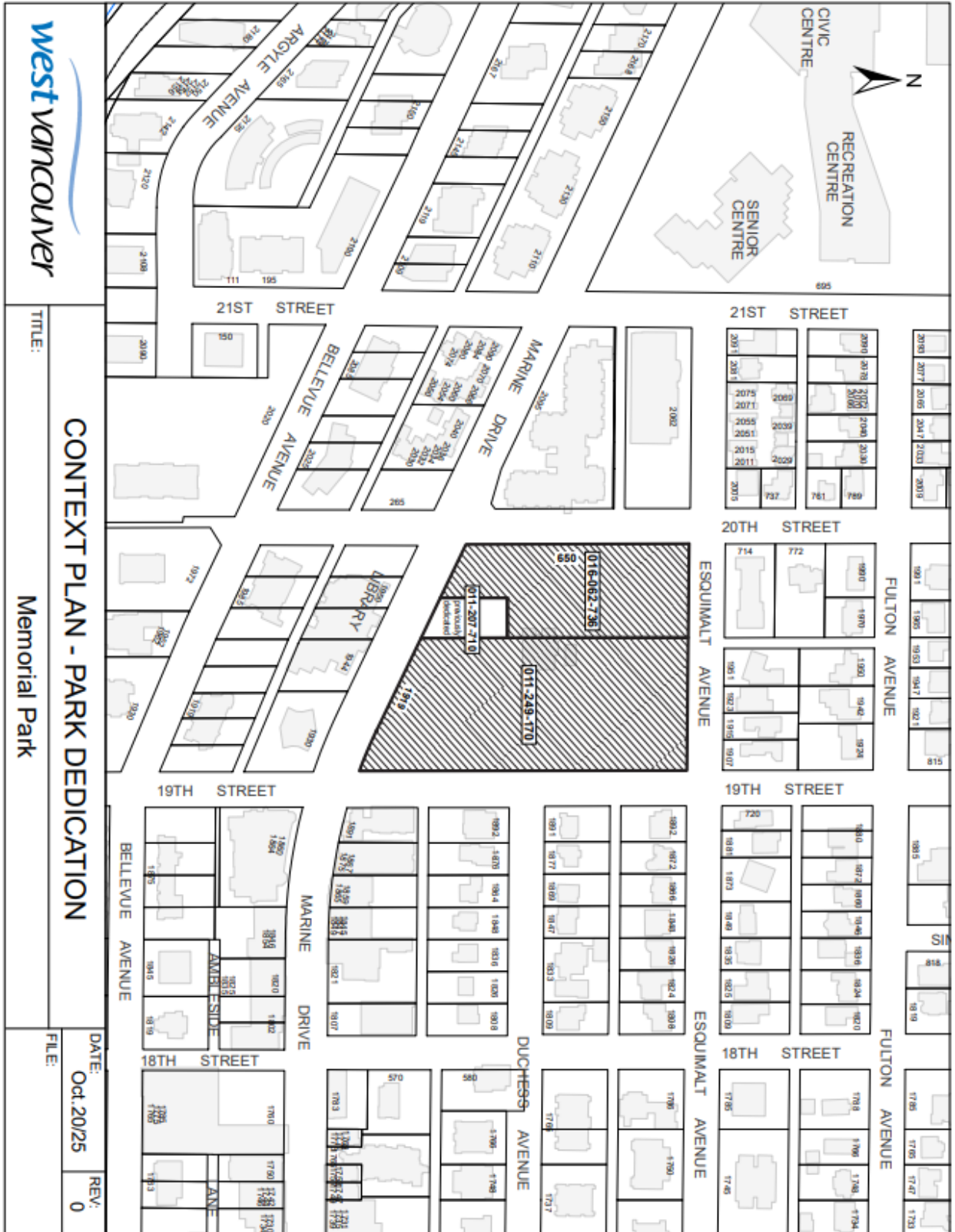


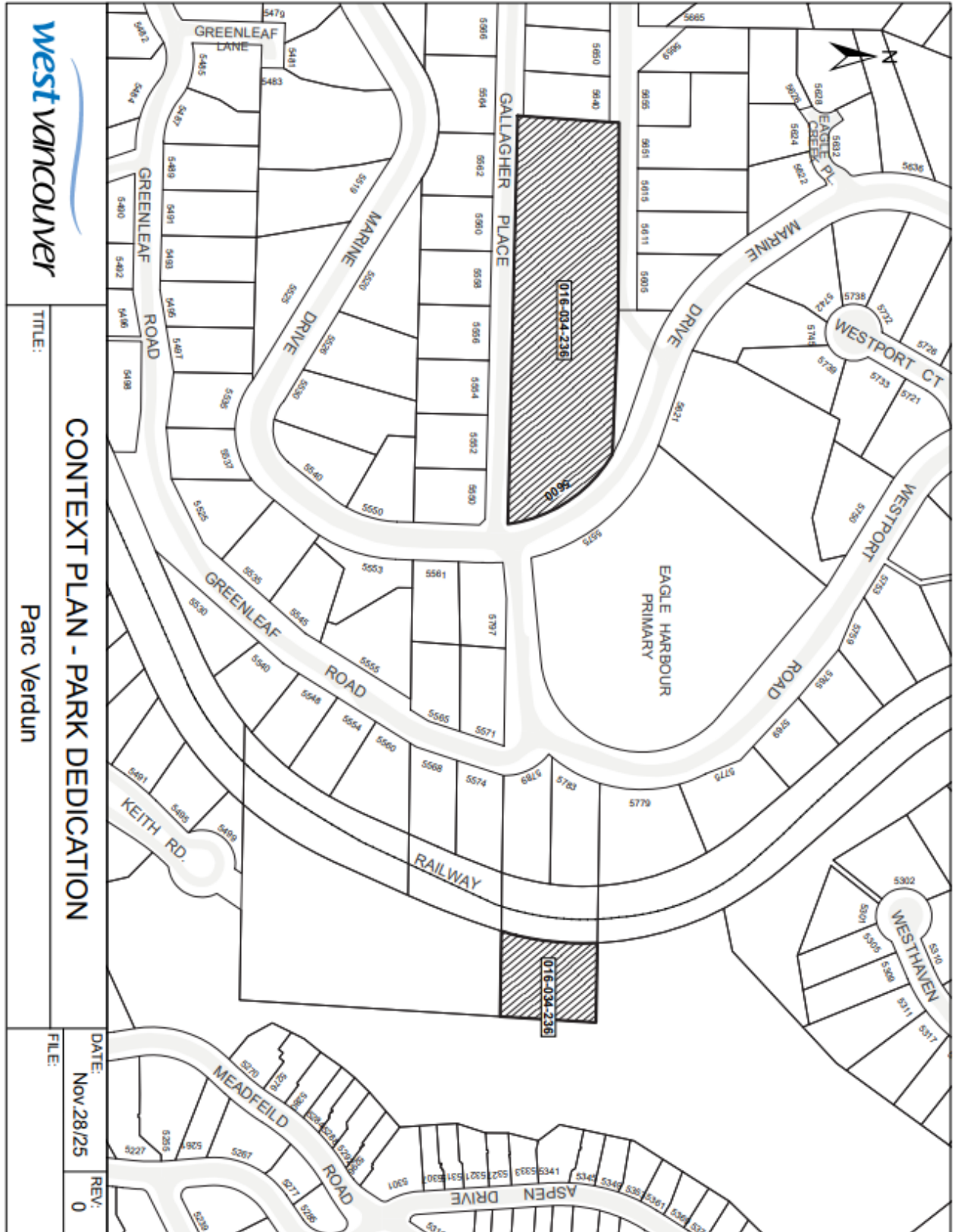


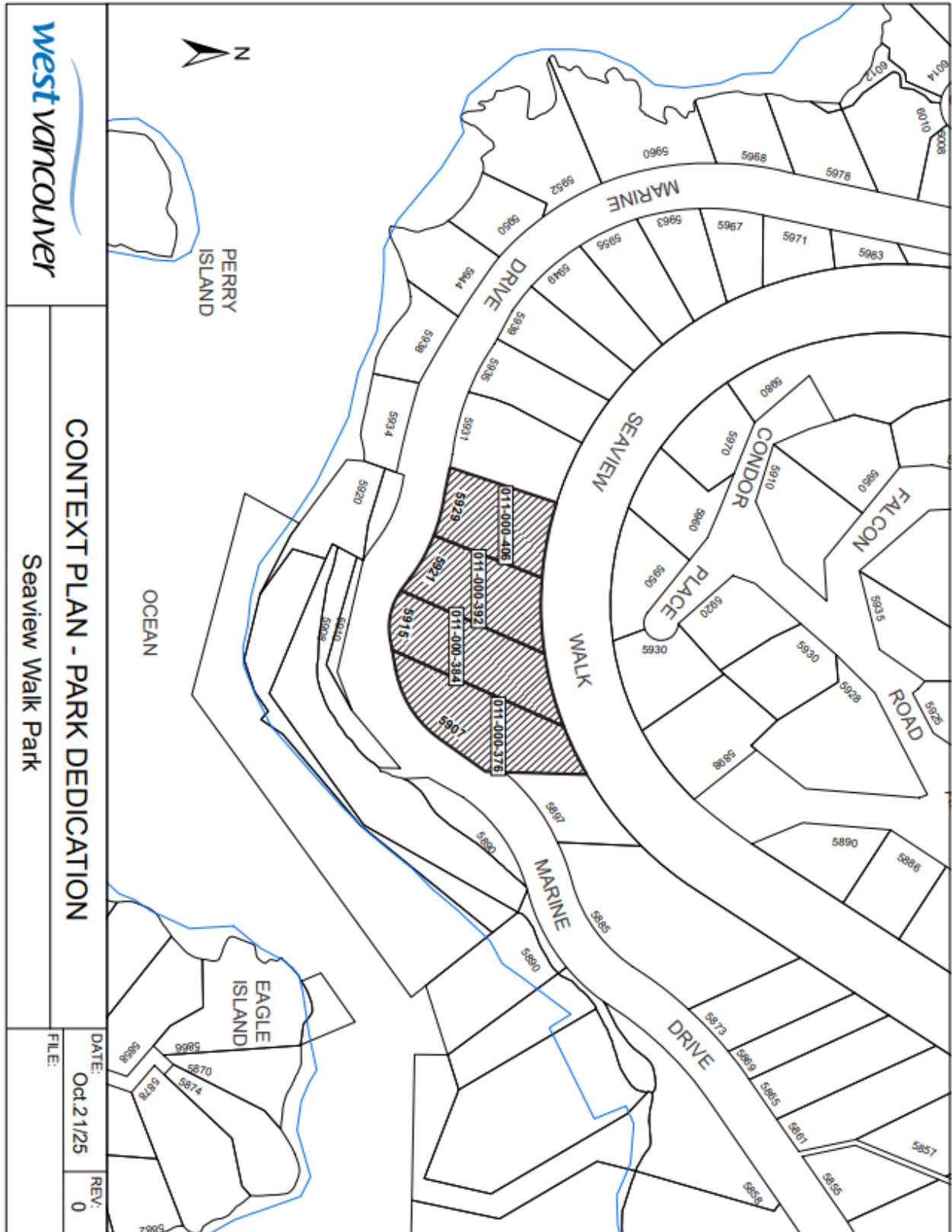












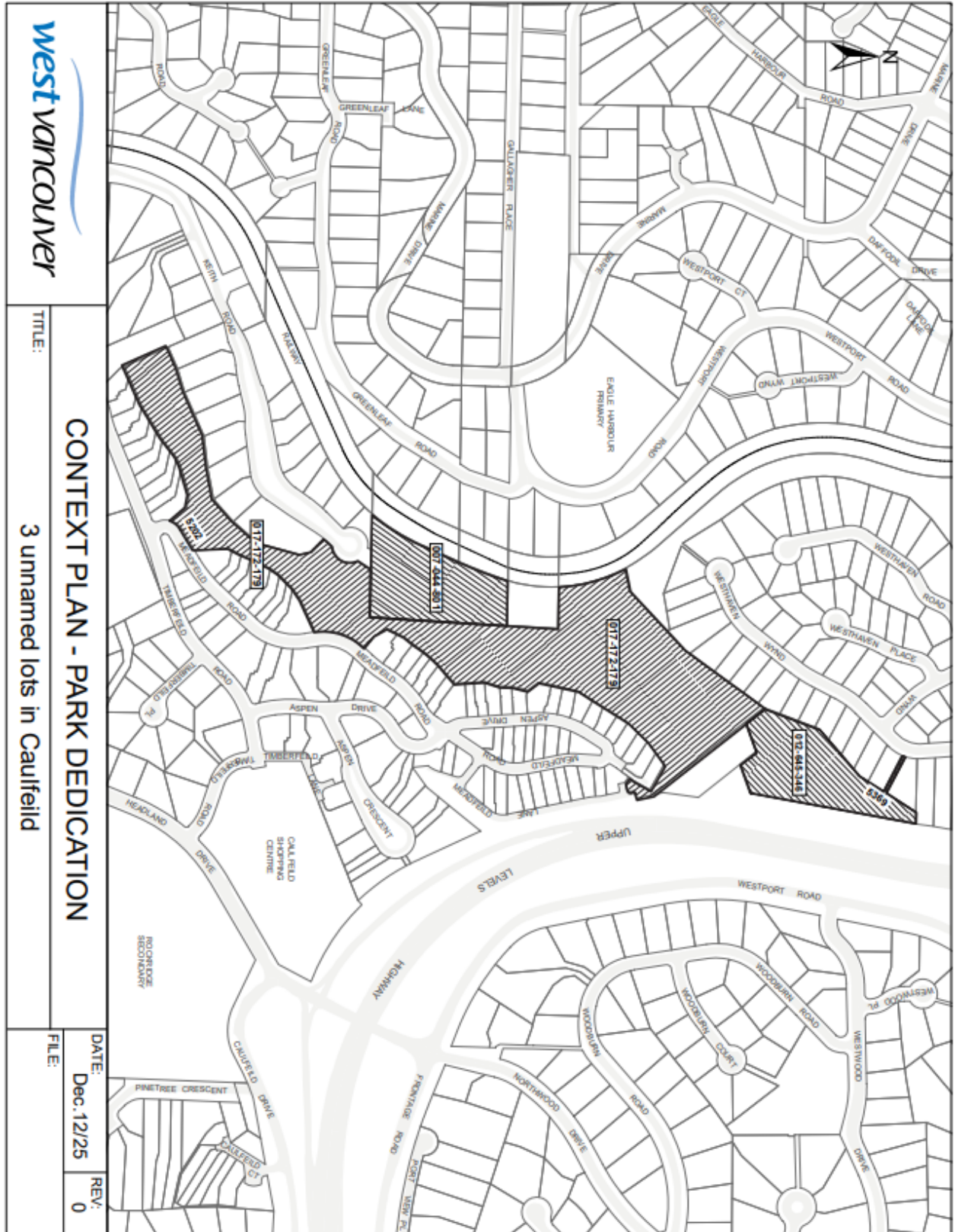
**westvancouver**

**CONTEXT PLAN - PARK DEDICATION**  
Seaview Walk Park

DATE:	Oct 21/25	REV:	0
FILE:			







**west van**ancouver

TITLE:

### CONTEXT PLAN - PARK DEDICATION

3 unnamed lots in Caulfeild

DATE: Dec. 12/25  
REV: 0

FILE: