

DISTRICT OF WEST VANCOUVER

OFFICIAL COMMUNITY PLAN

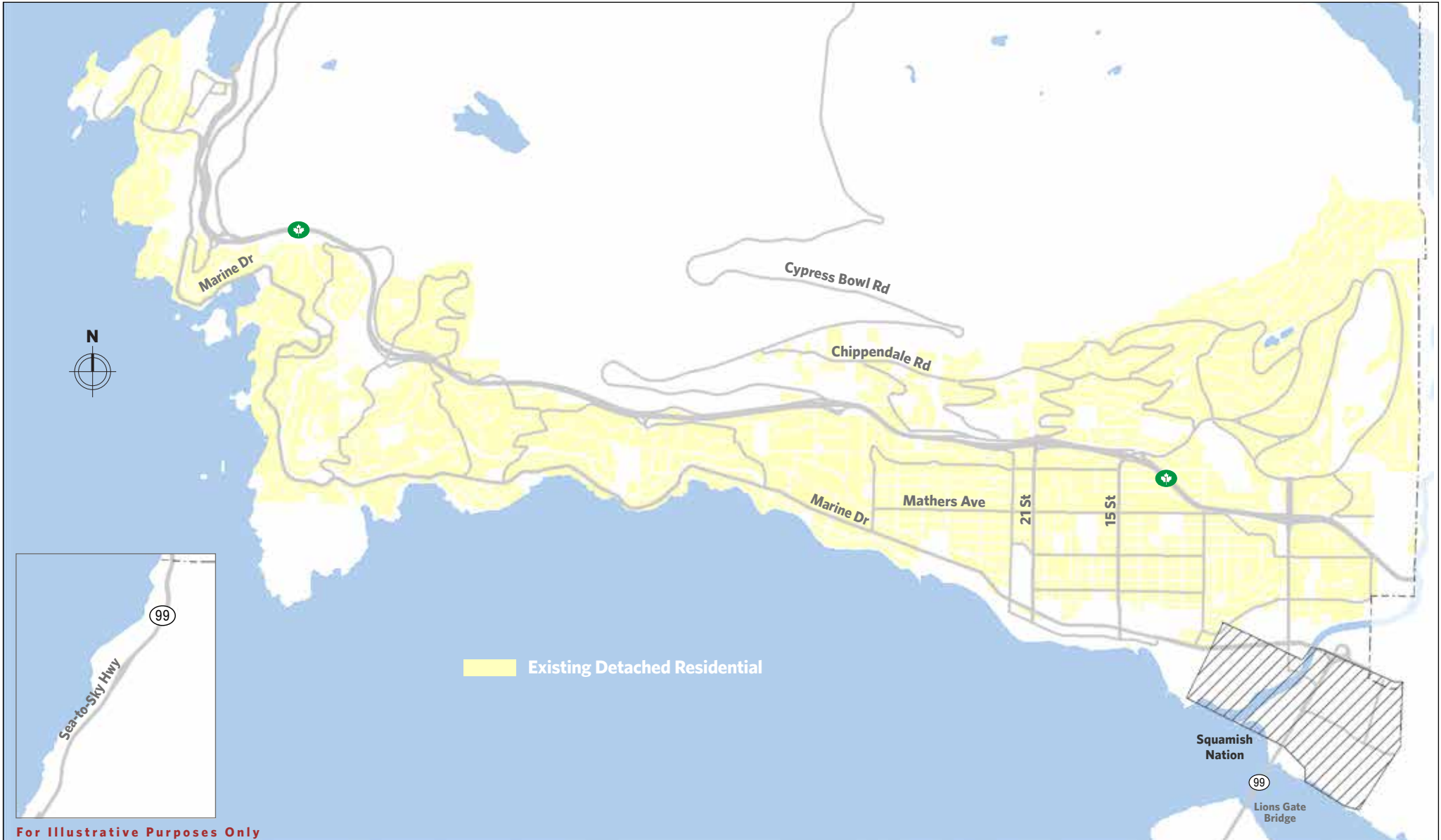


This page intentionally left blank

MAPS

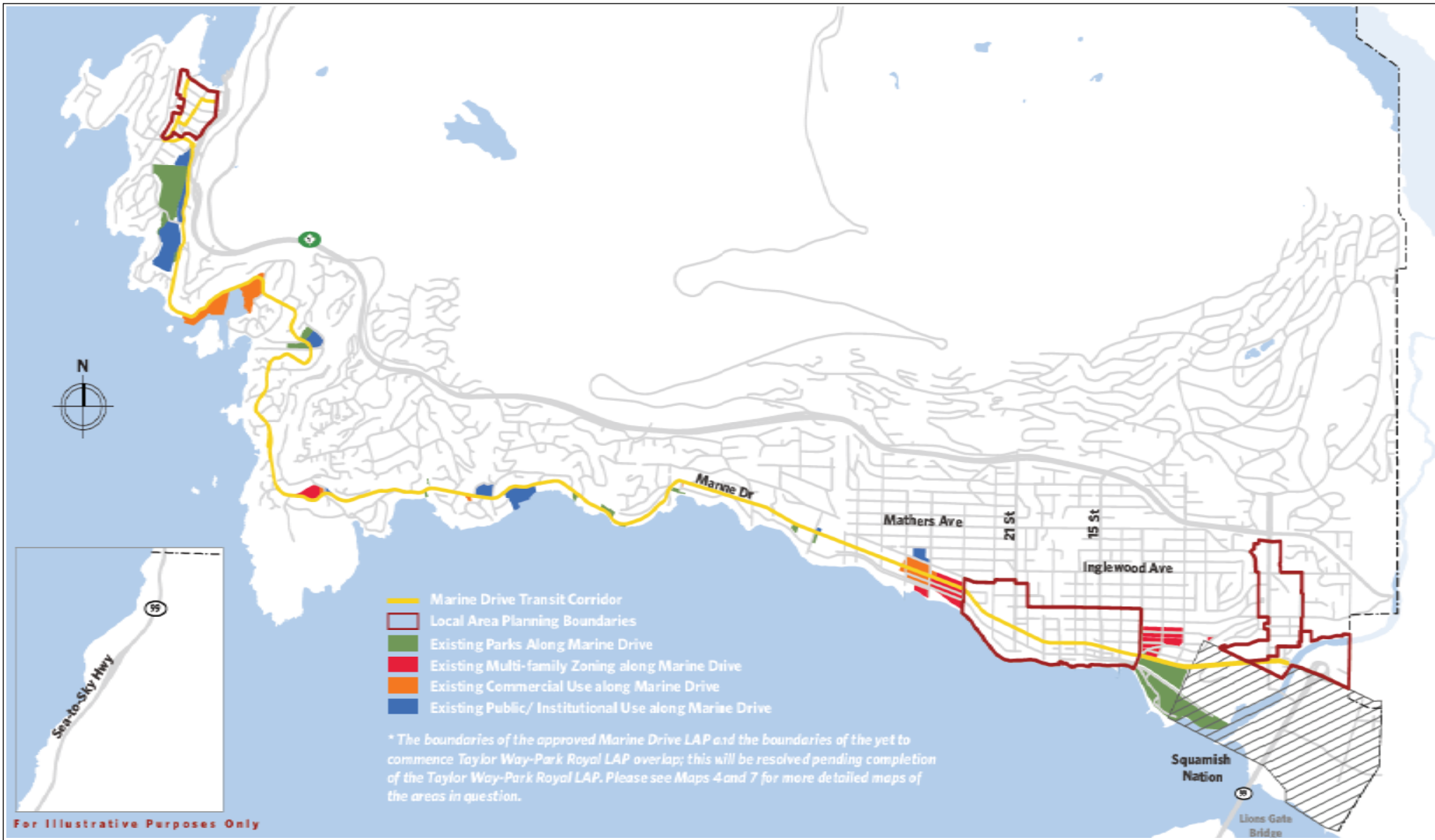
Map 1. Neighbourhood Infill Opportunities28
Map 2. Marine Drive Transit Corridor29
Map 3. Local Area Planning Boundaries32
Map 4. Marine Drive Local Area Plan Boundary33
Map 5. Ambleside Town Centre Local Area Planning Boundary34
Map 6. Horseshoe Bay Local Area Planning Boundary35
Map 7. Taylor Way-Park Royal Local Area Planning Boundary36
Map 8. Upper Lands Planning Framework	42
Map 9. Cypress Village and Cypress West Areas.43
Map 10. Commercial and Tourism Areas	49
Map 11. Active Transportation	54
Map 12. Transportation Network55
Map 13. Natural Environmental Resources	64
Map 14. Parks and Major Trails69
Map 15. Major Community Social Assets77
Map 16. Regional Land Use Designations	i) 3

MAP 1. NEIGHBOURHOOD INFILL OPPORTUNITIES

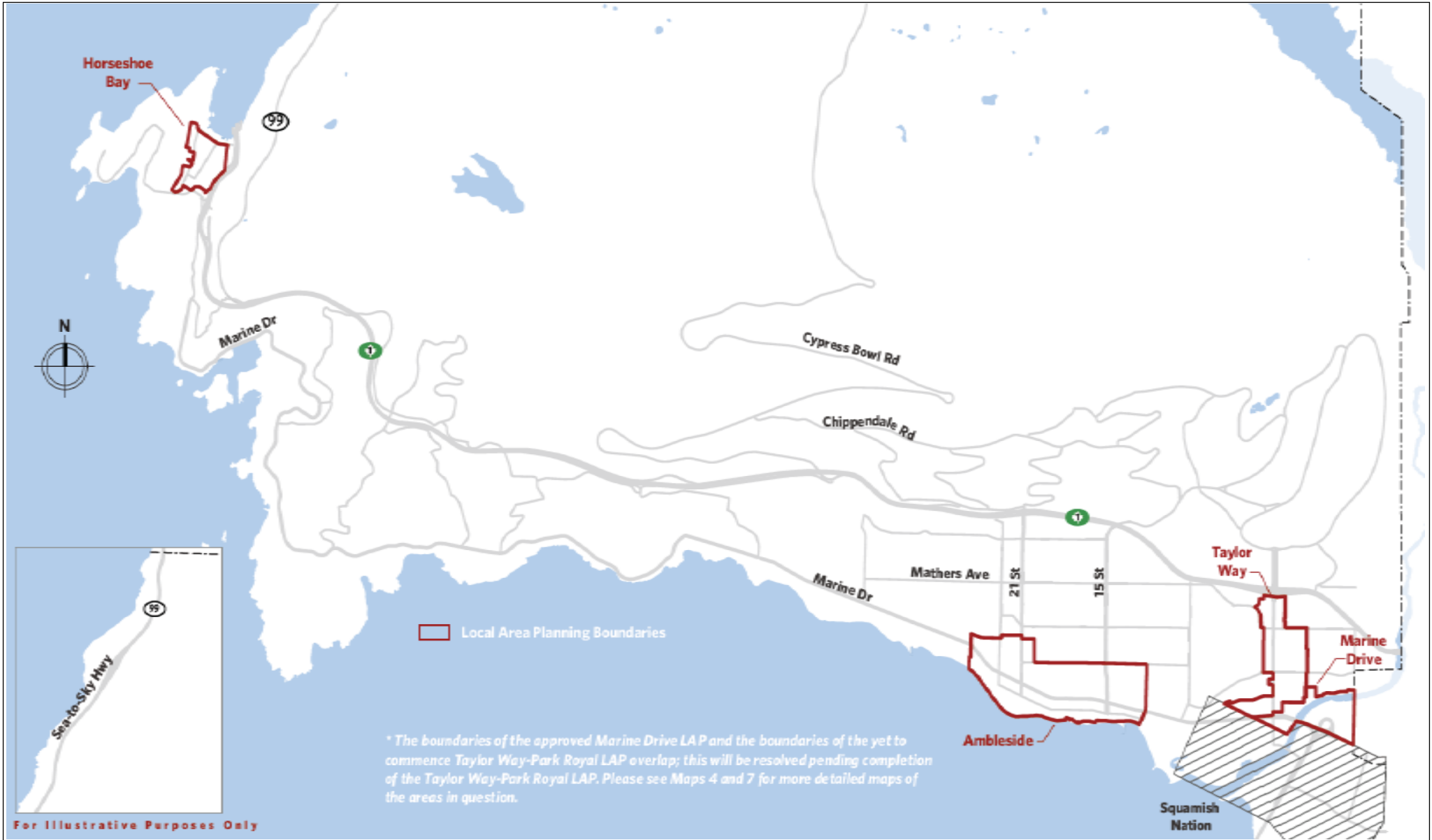


For Illustrative Purposes Only

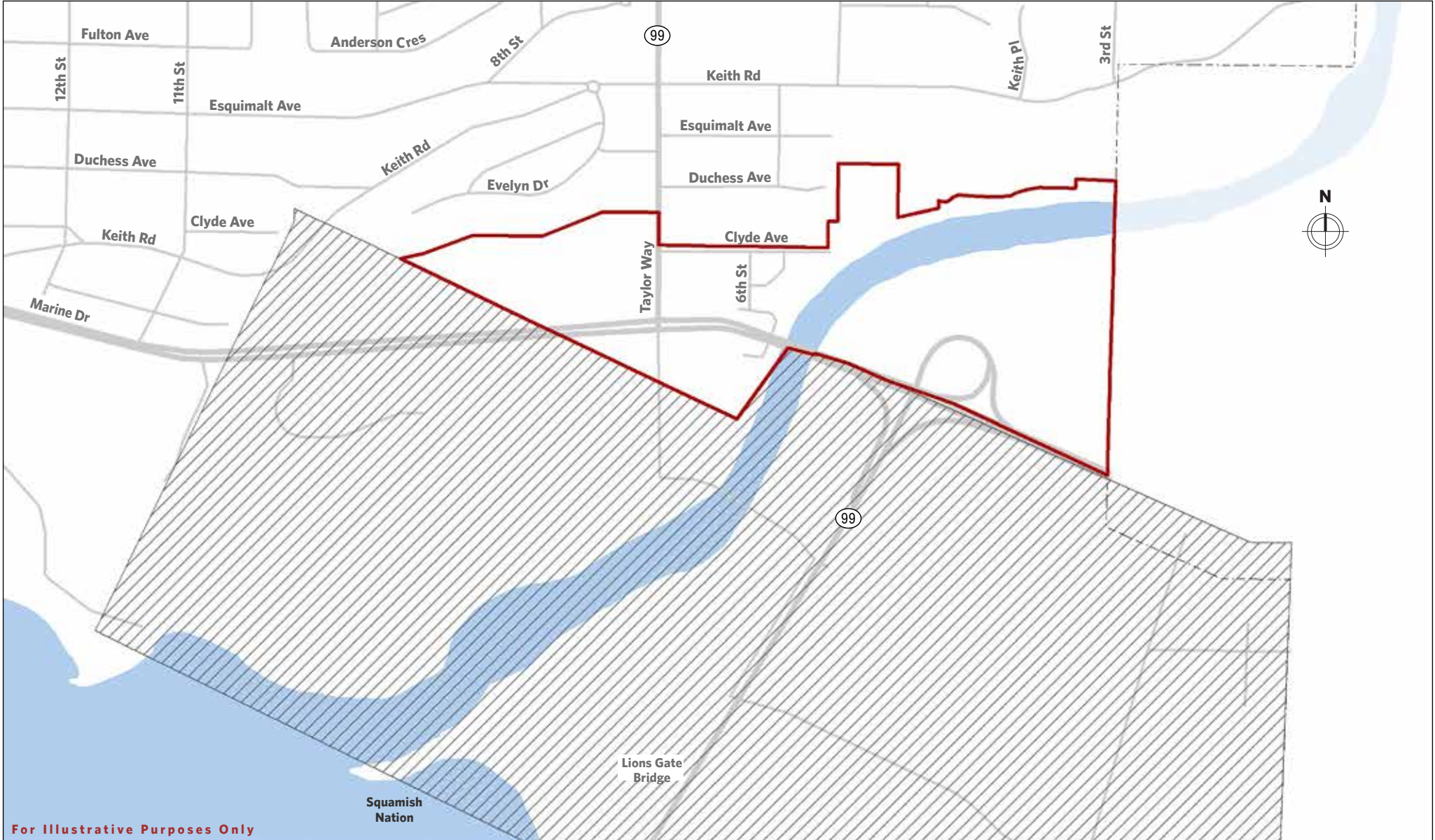
MAP 2. MARINE DRIVE TRANSIT CORRIDOR



MAP 3. LOCAL AREA PLANNING BOUNDARIES

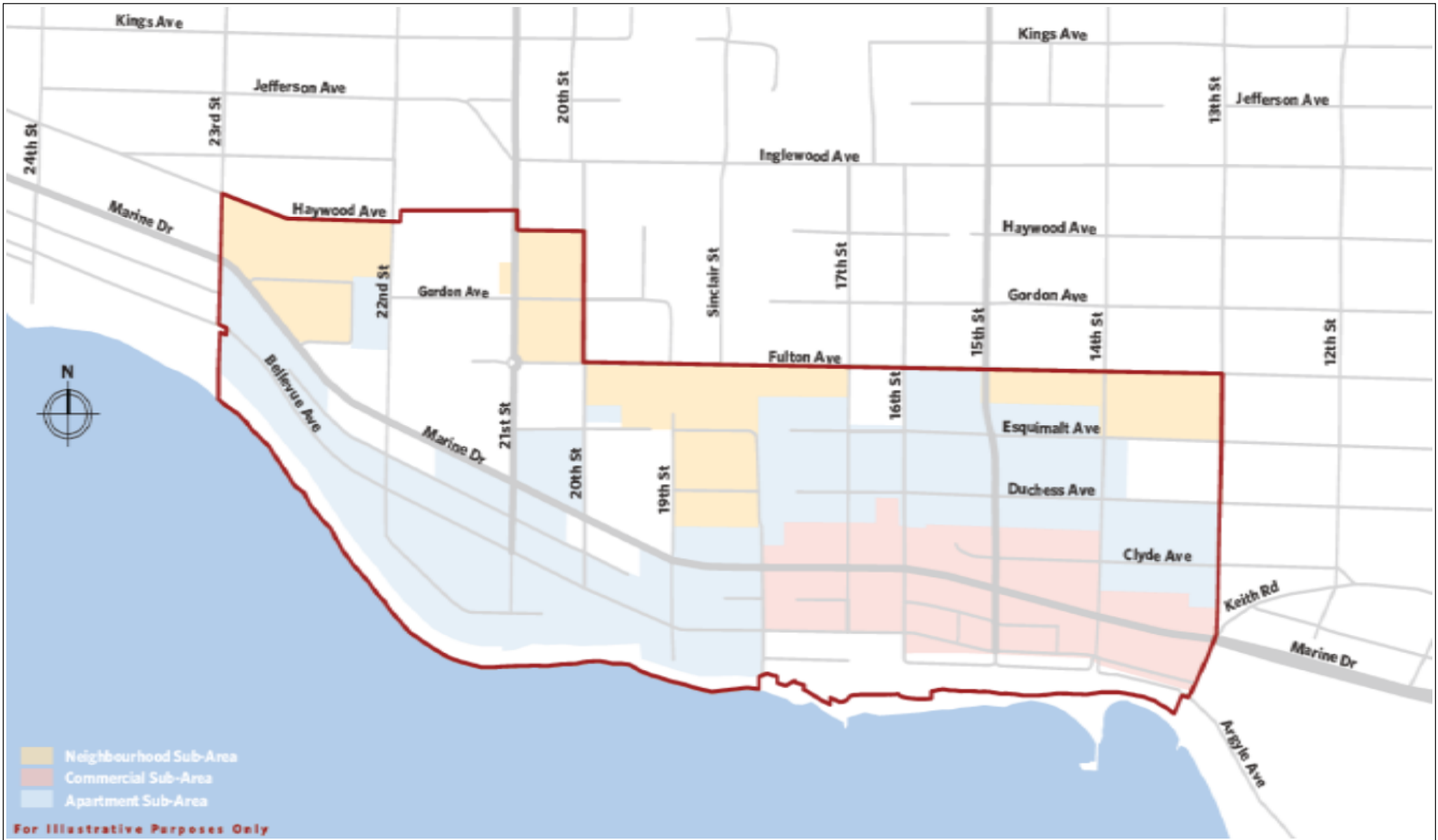


MAP 4. MARINE DRIVE LOCAL AREA PLAN BOUNDARY



For Illustrative Purposes Only

MAP 5. AMBLESIDE TOWN CENTRE LOCAL AREA PLANNING BOUNDARY



MAP 6. HORSESHOE BAY LOCAL AREA PLANNING BOUNDARY



MAP 7. TAYLOR WAY-PARK ROYAL LOCAL AREA PLANNING BOUNDARY



MAP 8. UPPER LANDS PLANNING FRAMEWORK



MAP 9. CYPRESS VILLAGE AND CYPRESS WEST AREAS



For Illustrative Purposes Only

MAP 10. COMMERCIAL AND TOURISM AREAS



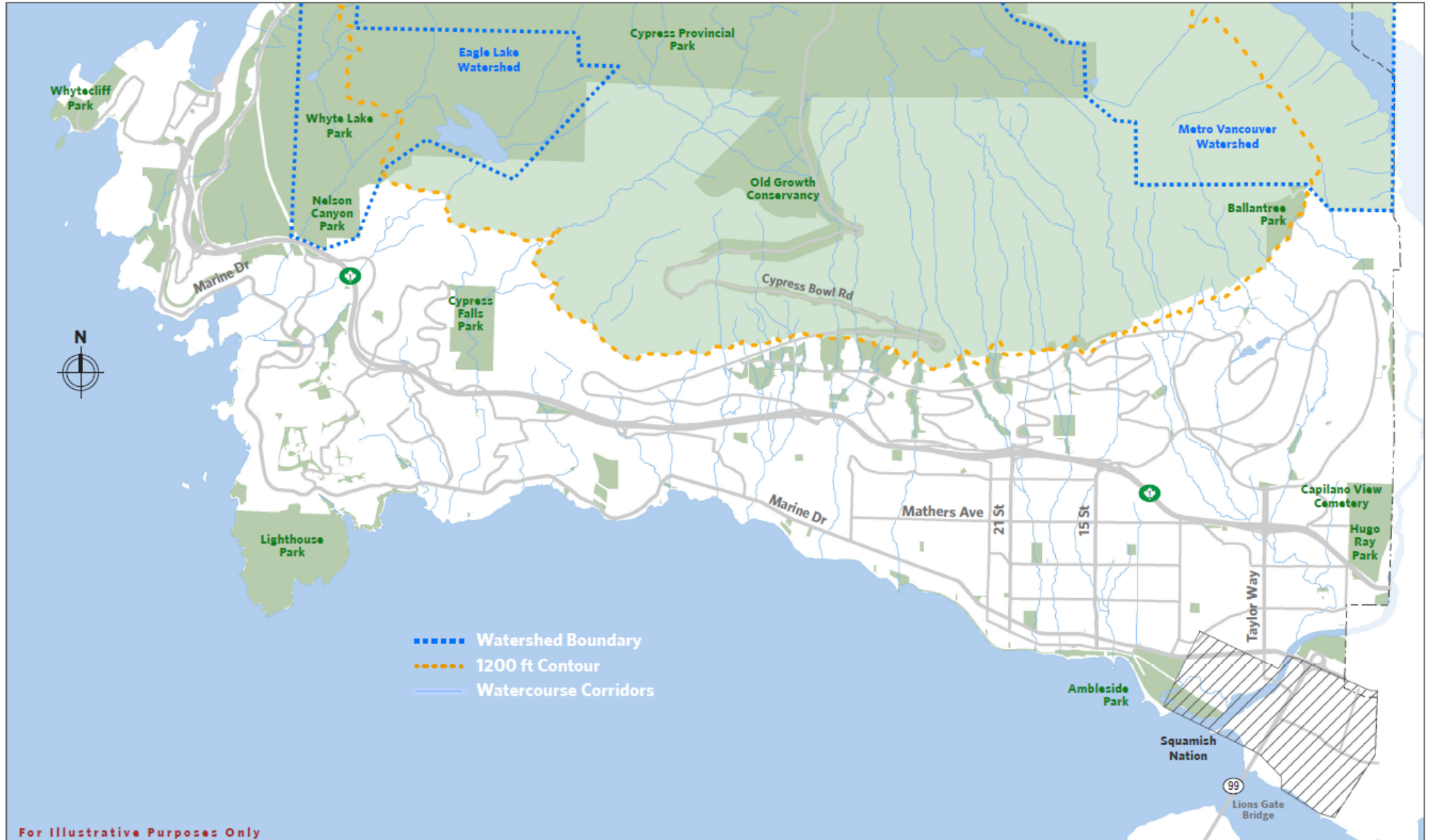
MAP 11. ACTIVE TRANSPORTATION



MAP 12. TRANSPORTATION NETWORK



MAP 13. NATURAL ENVIRONMENTAL RESOURCES



For Illustrative Purposes Only

MAP 14. PARKS AND MAJOR TRAILS



MAP 15. MAJOR COMMUNITY SOCIAL ASSETS



MAP 16. REGIONAL LAND USE DESIGNATIONS

