



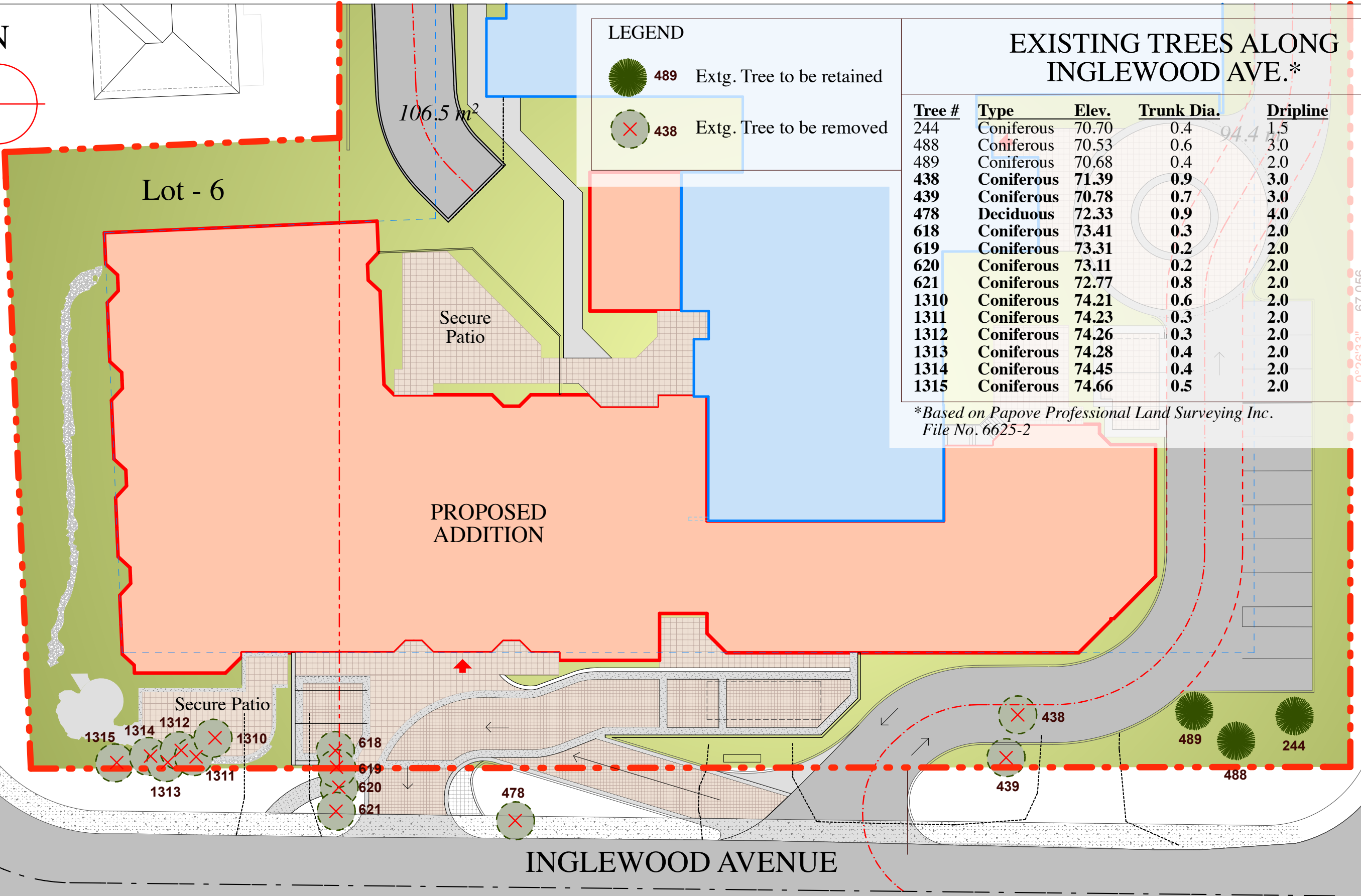
**LEGEND**

-  **489** Extg. Tree to be retained
-  **438** Extg. Tree to be removed

**EXISTING TREES ALONG INGLEWOOD AVE.\***

Tree #	Type	Elev.	Trunk Dia.	Dripline	Remarks
244	Coniferous	70.70	0.4	1.5	Retain
488	Coniferous	70.53	0.6	3.0	Retain
489	Coniferous	70.68	0.4	2.0	Retain
438	Coniferous	71.39	0.9	3.0	Remove
439	Coniferous	70.78	0.7	3.0	Remove
478	Deciduous	72.33	0.9	4.0	Remove
618	Coniferous	73.41	0.3	2.0	Remove
619	Coniferous	73.31	0.2	2.0	Remove
620	Coniferous	73.11	0.2	2.0	Remove
621	Coniferous	72.77	0.8	2.0	Remove
1310	Coniferous	74.21	0.6	2.0	Remove
1311	Coniferous	74.23	0.3	2.0	Remove
1312	Coniferous	74.26	0.3	2.0	Remove
1313	Coniferous	74.28	0.4	2.0	Remove
1314	Coniferous	74.45	0.4	2.0	Remove
1315	Coniferous	74.66	0.5	2.0	Remove

\*Based on Papove Professional Land Surveying Inc.  
File No. 6625-2



• This drawing is copyright material. Reproduction in whole or in part is prohibited. This drawing is an instrument of service and remains the property of the Architect and may not be used in any way without the written permission of the Office.  
• This drawing must not be scaled. The Contractor shall verify all dimensions, datums and levels. All discrepancies, errors and omissions shall be reported immediately to the Architect before the work proceeds.  
• All work shall conform to the current edition of the BCBC and all other applicable supplements, by-laws and regulations.

Architect  
**IRA**  
ISAAC-RENTON ARCHITECT INC.  
206-2780 Granville St., Vancouver, BC V6H 3J3  
604 682-1344 604 688-7136 fax Toll Free: 1 800 377-6994  
rir@telus.net www.isaacrenton.com

Client  
**Unicare Management Inc.**  
207-828 Harbourside Drive, North Vancouver, BC

Project  
INGLEWOOD CARE CENTRE  
Proposed Addition  
725 Inglewood Avenue, West Vancouver, BC

Sheet Title  
EXISTING TREES ALONG  
INGLEWOOD AVENUE

Scale:  
1:300/1:600 m.  
Checked by:  
RIR

Date:  
15 June 2017  
Drawn by:  
js

Job.No.  
13-400  
APPENDIX  
**5**