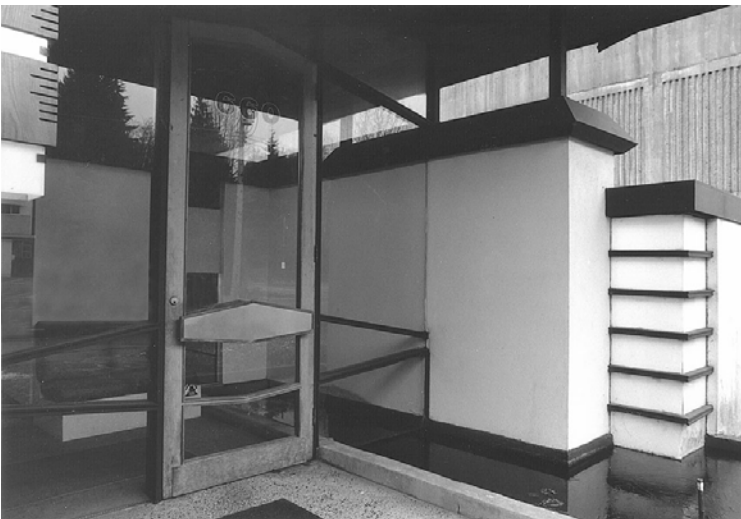


**Statement of Significance
Woyatt-Bowie Building
660 Clyde Avenue
West Vancouver, BC
May 2008**



Historic Place

The Woyatt-Bowie Building is a small Modernist building constructed in 1966. It was designed by Fred T. Hollingsworth and Barry V. Downs for two West Vancouver dentists, Drs. Woyatt and Bowie. The property is situated at 660 Clyde Avenue, directly east of the Park Royal Shopping Centre.

Heritage Value

The historic place has heritage value for its Modernist architecture in a commercial setting. It also has value as a work of the early maturity of two collaborating North Shore architects, Fred Hollingsworth and Barry Downs, who

became leaders in West Vancouver modernism. The small-scaled, single-storey building is exquisitely simple in design, consisting of two blocks connected by a roof that floats above a glazed central entryway. The design exemplifies the West Coast version of International Style modernism, characterized by its intimate scale and reflective of Japanese architecture and the buildings of Frank Lloyd Wright, both of which Hollingsworth and Downs expressly admired. The urban setting is softened by a landscaped courtyard with a reflecting pool, which originally featured a thick bamboo grove. It was intended as a calming oasis for those who may have felt uncomfortable about visiting a dentist, while also reinforcing the West Coast tendency to link architecture to nature.

Character-Defining Elements

The character-defining elements of the Woyatt-Bowie Building include:

- The features of West Coast / International Style Modernist architecture, which include:
 - The central, glazed portion, with a cantilevered, flat roof, exposed posts between the window panes, and angled mullions in the windows beside the entrance
 - The rectilinear blocks at either side, finished in white stucco with dark-stained cedar trim
 - The glazed front door, with its lozenge-shaped push bar
 - The terrazzo floors
- The landscape features, which include:
 - The narrow reflecting pool at the base of the walls
 - The planting beds between the sidewalk and the reflecting pool
- The external light fixture to the left of the entrance
- The freestanding sign to the left of the entrance
- The location of the parking lot at the rear, where it does not interfere with the appearance of the front elevation